

Atlas Copco Stationary Air Compressors

GA 55+, GA 75+, GA 90 Aircooled
GA 55+, GA 75+, GA 90 Watercooled

Parts list

From following serial No. onwards:

AII 380 000

- Copyright 2006, Atlas Copco Airpower n.v., Antwerp, Belgium.
Any unauthorized use or copying of the contents or any part thereof is prohibited.
This applies in particular to trademarks, model denominations, part numbers and drawings.
- **Use only authorized parts.** Any damage or malfunction caused by the use of unauthorized parts is not covered by Warranty or Product Liability.

No. 2930 1430 01

Registration code : APC G 55-90 / 39

2006-06

www.atlascopco.com

Atlas Copco

Contents
Inhoud
Innehåll
Inhaltsverzeichnis
Table des matières
Indice

Indice
Innholdsfortegnelse
Indice
Indholdsfortegnelse
Sisällysluettelo

Compressor element(s) and drive gear
Compressorelement(en) en aandrijving
Kompressorelement och drivning
Kompressorelement(e) und Antrieb
Elément(s) compresseur(s) et entraînement
Elemento(s) compresor(es) y accionamiento
Elemento(i) compressore e ingranaggi di azionamento
Kompressorelement og drivhjul
Elemento(s) compresor(es) e accionamento
Kompressorelement(er) og drivgir
Kompressorielementit ja voimansiirto
1

Air inlet
Luchtinlaat
Luftintag
Lufteinlaß
Admission d'air
Entrada de aire
Presa d'aria
Luftindsug
Admissão de ar
Luftinnløp
Tuloilma
2

Unloader
Ontlader
Avlastningsenhet
Entlastungsvorrichtung
Déchargeur
Descargador
Gruppo di messa a vuoto
Aflaster
Sistema de descarga
Avlaster
Kevennin
3

Air receiver
Luchtketel
Luftbehållare
Luftbehälter
Réservoir d'air
Depósito de aire
Serbatoio dell'aria
Oliebeholder
Reservatório de ar
Luftbeholder
Ilmasäiliö
4

Air flow and cooling system
Luchtstroming en koelsysteem
Luftflöde och kylsystem
Luftstrom und Kühlsystem
Flux d'air et circuit de refroidissement
Flujo de aire y sistema de refrigeración
Flusso d'aria e sistema di raffreddamento
Luftflow og kølesystem
Fluxo de ar e sistema de arrefecimento
Luftstrøm og kjølesystem
Ilman virtaus ja jäähdytysjärjestelmä

- GA (A)
5
- GA (W)
6

Oil system
Oliesysteem
Oljesystem
Ölsystem
Système d'huile
Sistema de aceite
Sistema dell'olio
Oliesystem
Sistema de óleo
Oljesystem
Voitelujärjestelmä
7

Air outlet
Luchtuitlaat
Luftutlopp
Luftauslaß
Sortie d'air
Salida de aire
Mandata dell'aria
Luftafgang
Saida de ar
Luftutløp
Paineilmaputki

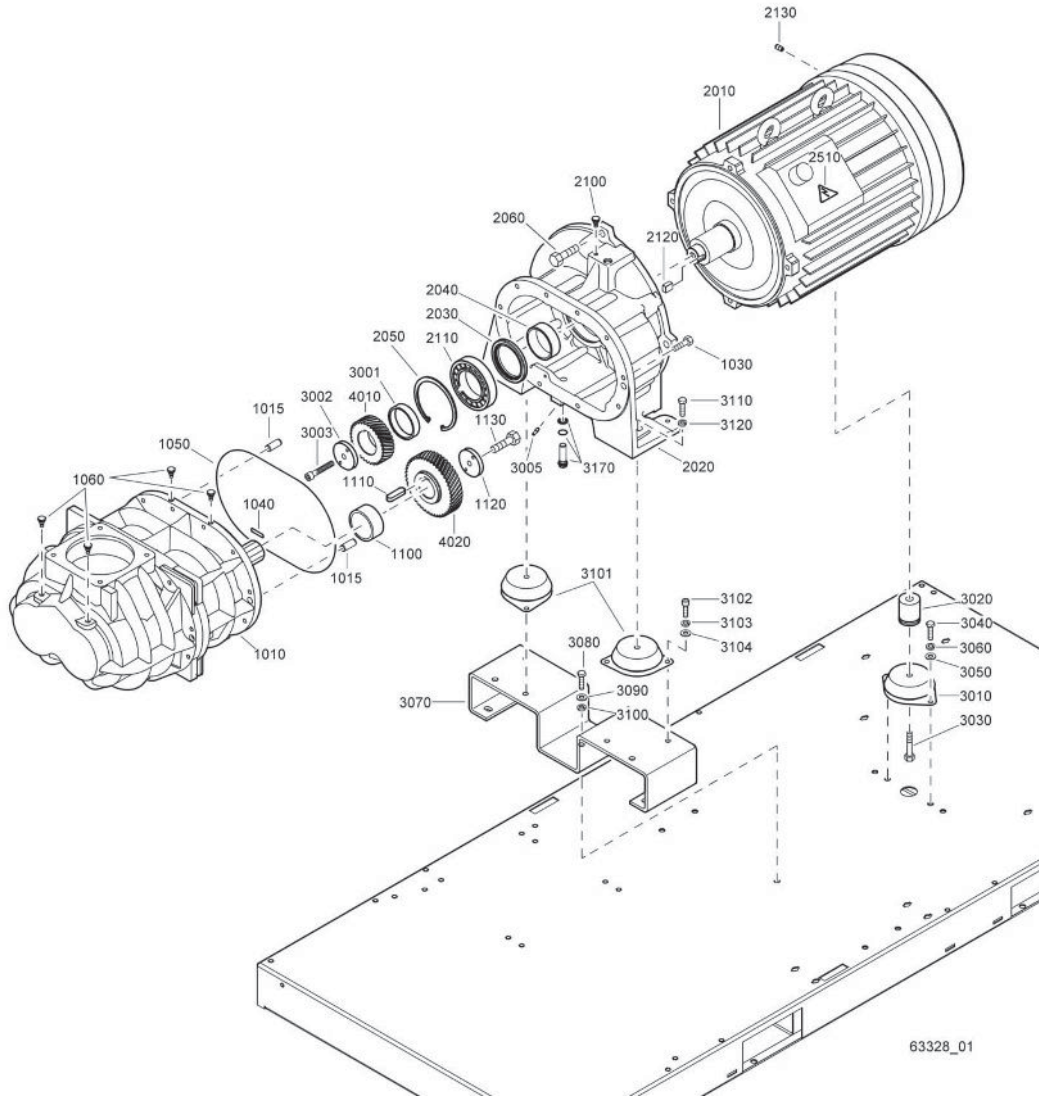
- Pack - GA (A)
8
- Pack - GA (W)
9
- Full Feature - GA (A)
10
- Full Feature - GA (W)
11

Contents	
Inhoud	
Innehåll	
Inhaltsverzeichnis	
Table des matières	
Indice	

Indice	
Innholdsfortegnelse	
Indice	
Indholdsfortegnelse	
Sisällyslueetelo	

Air dryer		Start cubicle	
Luchtdroger		Startkast	
Lufttorkare		Startskåp	
Lufttrockner		Anlaßschrank	
Sécheur d'air		Armoire de démarrage	
Secador de aire		Cubículo de arranque	
Essiccatore d'aria		Armadio apparecch. di avviamento	
Lufttørrer		Starterskab	
Secador de ar		Cubículo-arranque	
Lufttørker		Startskap	
Kuivain		Käynnistinkotelo	
- Full Feature	12	- CSA/UL	17
Drain system		- IEC	18
Aftapsysteem		Bodywork	
Avtappningssystem		Carrosserie	
Abläßsystem		Karosseri	
Système de vidange		Karosserie	
Sistema de drenaje		Capotage	
Sistema di scarico		Carroceria	
Drænsystem		Cappottatura	
Sistema de drenagem de condensados		Karosseri	
Avtappingssystem		Carroceria	
Lauhteenpoistojärjestelmä		Kabinett	
- Pack - GA (A)	13	Kotelo	
- Pack - GA (W)	14	- GA (A/W) - Common parts	19
- Full Feature - GA (A)	15	Service kits	
- Full Feature - GA (W)	16	Service kits	
		Service Kits	
		Service kits	
		Service kits	
		Kit per la manutenzione	
		Service kits	
		Conjuntos de reparação	
		Servicesett	
		Huoltotarvikesarjat	20

1



63328_01

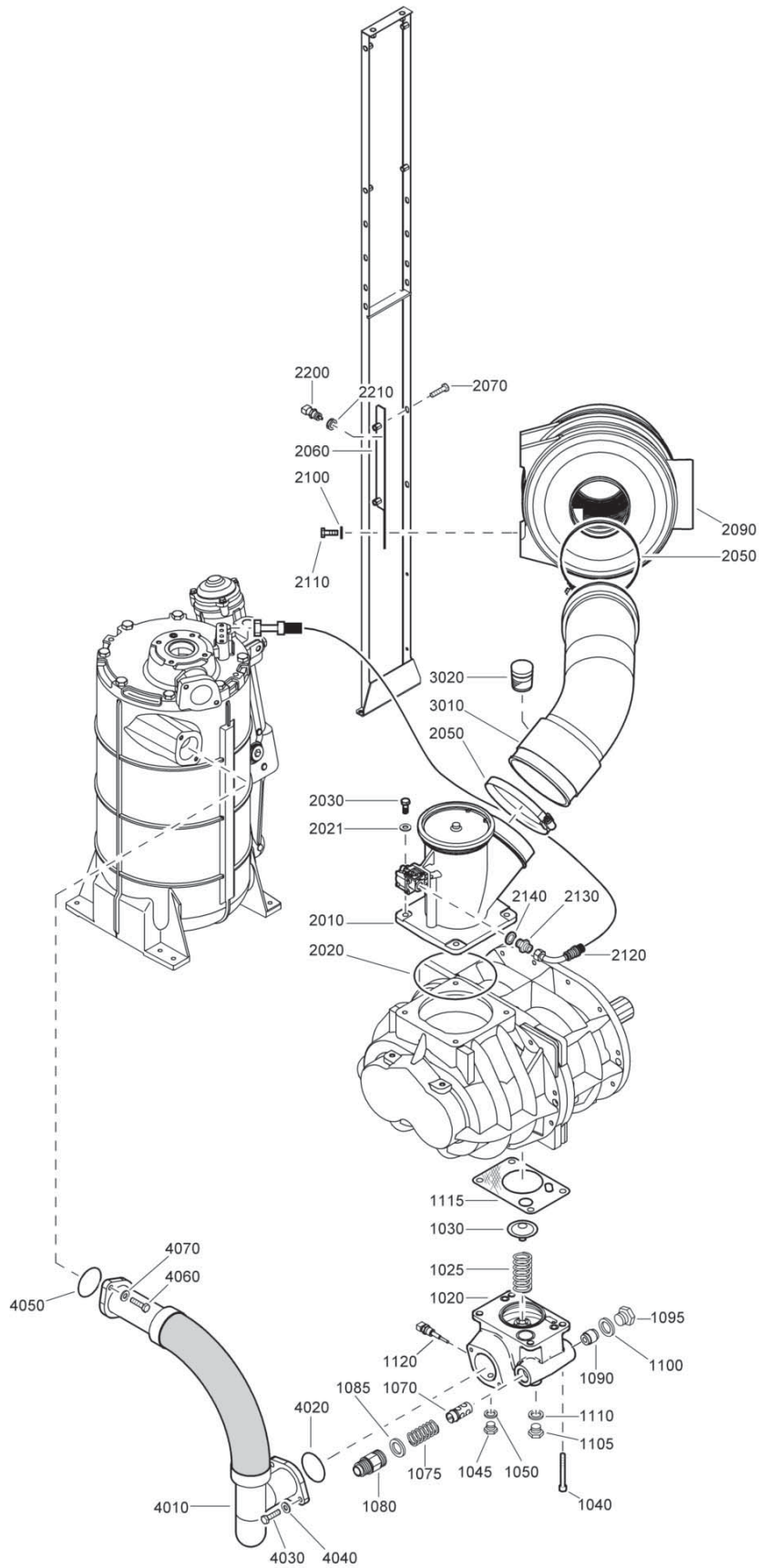
Ref.	Part number	Qty	Name	Remarks	Ref.	Part number	Qty	Name	Remarks
1010	1616 7146 90	1	Service stage		1080 4241 01		1	GA 55+ (A) 200V/50Hz	
1015	0101 1951 40	2	Pin		1080 4241 11		1	GA 55+ (A/W) 200V/60Hz	
1030	0147 1365 03	10	Hexagon bolt		1080 4241 02		1	GA 55+ (A/W) 230V/50Hz	
1040	0663 2111 46	1	O-ring		1080 4241 18		1	GA 55+ (A/W) 230V/60Hz	
1050	0663 2109 78	1	O-ring		1080 4241 13		1	GA 55+ (A/W) 380V/60Hz	
1060	1619 6032 00	4	Nipple		1080 4241 04		1	GA 55+ (A/W) 400V/50Hz	
1100	1622 4633 00	1	Spacer		1080 4241 17		1	GA 55+ (A/W) 460V/60Hz	
1110	0337 2293 23	1	Parallel key		1080 4241 06		1	GA 55+ (A/W) 500V/50Hz	
1120	1622 3668 00	1	Washer		1080 4241 14		1	GA 55+ (A/W) 575V/60Hz	
1130	0211 1963 16	1	Hex socket screw		1080 4242 11		1	GA 75+ (A/W) 200V/60Hz	
2010		1	Motor		1080 4242 02		1	GA 75+ (A/W) 230V/50Hz	
	1080 4241 01		GA 55+ (A) 200V/50Hz		1080 4242 18		1	GA 75+ (A/W) 230V/60Hz	
	1080 4241 11		GA 55+ (A/W) 200V/60Hz		1080 4242 13		1	GA 75+ (A/W) 380V/60Hz	
	1080 4241 02		GA 55+ (A/W) 230V/50Hz		1080 4242 04		1	GA 75+ (A/W) 400V/50Hz	
	1080 4241 18		GA 55+ (A/W) 230V/60Hz		2020	1622 3666 00	1	Gearbox housing	
	1080 4241 13		GA 55+ (A/W) 380V/60Hz		2030	1616 5517 00	1	Lip seal	
	1080 4241 04		GA 55+ (A/W) 400V/50Hz		2040	1622 3665 00	1	Bushing	
	1080 4241 17		GA 55+ (A/W) 460V/60Hz		2050	0335 2178 00	1	Circlip	
	1080 4241 06		GA 55+ (A/W) 500V/50Hz		2060	0147 1477 03	4	Bolt	
	1080 4241 14		GA 55+ (A/W) 575V/60Hz		2100	1619 6032 00	1	Nipple	
	1080 4242 11		GA 75+ (A/W) 200V/60Hz		2110	0508 1100 98	1	Bearing	
	1080 4242 02		GA 75+ (A/W) 230V/50Hz		2120	1622 3645 00	1	Key	
	1080 4242 18		GA 75+ (A/W) 230V/60Hz		2130	1622 3740 00	1	Drain nipple	
	1080 4242 13		GA 75+ (A/W) 380V/60Hz		2510	1088 1001 04	1	Warning mark	
	1080 4242 04		GA 75+ (A/W) 400V/50Hz		3001	1622 3667 00	1	Spacer	
					3002	1622 3668 00	1	Washer	
					3003	0211 1963 16	1	Hexagon screw	
					3005	1622 3793 00	1	Oil nozzle	

Compressor element and drive gear

1

Ref.	Part number	Qty	Name	Remarks	Ref.	Part number	Qty	Name	Remarks
3010	1613 6752 19	1	Antivibration pad		1622 3692 01		1	GA 90 13 bar(e)	
3020	1613 9598 01	1	Spacer		1622 3692 27		1	GA 90 13 bar(e) HAV	
3030	0147 1493 03	1	Hex.bolt		1622 3692 37		1	GA 90 100 psig	
3040	0211 1400 03	2	Cap screw		1622 3692 01		1	GA 90 100 psig HAV	
3050	0301 2358 00	2	Washer		1622 3692 01		1	GA 90 125 psig	
3060	0333 3237 00	2	Lock washer		1622 3692 27		1	GA 90 125 psig HAV	
3070	1622 3622 00	1	Support		1622 3692 27		1	GA 90 150 psig	
3080	0147 1400 03	5	Hexagon bolt		1622 3692 23		1	GA 90 150 psig HAV	
3090	0301 2358 00	5	Washer		1622 3692 21		1	GA 90 175 psig	
3100	0333 3237 00	5	Lock washer		1622 3692 17		1	GA 90 175 psig HAV	
3101	1613 6752 18	2	Antivibration pad	4020			1	Gear driven	
3102	0211 1400 03	4	Cap screw		1622 3692 08		1	GA 55+ 7.5 bar(e)	
3103	0333 3237 00	4	Lock washer		1622 3692 08		1	GA 55+ 7.5 bar(e) JPN 50Hz	
3104	0301 2358 00	4	Washer		1622 3692 14		1	GA 55+ 7.5 bar(e) JPN 60Hz	
3110	0147 1479 03	2	Hexagon bolt		1622 3692 18		1	GA 55+ 7.5 bar(e) HAV	
3120	0301 2378 00	2	Washer		1622 3692 20		1	GA 55+ 8 bar(e)	
3170	1622 3698 80	1	Plug assembly		1622 3692 18		1	GA 55+ 8 bar(e) HAV	
	1622 3698 00	• 1	Plug		1621 3692 16		1	GA 55+ 10 bar(e)	
	1622 3699 00	• 1	Magnet		1621 3692 16		1	GA 55+ 10 bar(e) JPN 50Hz	
	0663 2101 80	• 1	O-Ring		1622 3692 10		1	GA 55+ 10 bar(e) JPN 60Hz	
4010		1	Gear drive		1622 3692 12		1	GA 55+ 10 bar(e) HAV	
	1622 3692 07		GA 55+ 7.5 bar(e)		1622 3692 14		1	GA 55+ 100 psig	
	1622 3692 07		GA 55+ 7.5 bar(e) JPN 50Hz		1622 3692 12		1	GA 55+ 100 psig HAV	
	1622 3692 13		GA 55+ 7.5 bar(e) JPN 60Hz		1622 3692 12		1	GA 55+ 125 psig	
	1622 3692 17		GA 55+ 7.5 bar(e) HAV		1622 3692 10		1	GA 55+ 125 psig HAV	
	1622 3692 19		GA 55+ 8 bar(e)		1622 3692 06		1	GA 55+ 150 psig	
	1622 3692 17		GA 55+ 8 bar(e) HAV		1622 3692 42		1	GA 75+ 7.5 bar(e)	
	1622 3692 15		GA 55+ 10 bar(e)		1622 3692 42		1	GA 75+ 7.5 bar(e) JPN 50Hz	
	1622 3692 15		GA 55+ 10 bar(e) JPN 50Hz		1622 3692 44		1	GA 75+ 7.5 bar(e) JPN 60Hz	
	1622 3692 09		GA 55+ 10 bar(e) JPN 60Hz		1622 3692 38		1	GA 75+ 7.5 bar(e) HAV	
	1622 3692 11		GA 55+ 10 bar(e) HAV		1622 3692 38		1	GA 75+ 8 bar(e)	
	1622 3692 13		GA 55+ 100 psig		1622 3692 34		1	GA 75+ 8 bar(e) HAV	
	1622 3692 11		GA 55+ 100 psig HAV		1622 3692 32		1	GA 75+ 10 bar(e)	
	1622 3692 11		GA 55+ 125 psig		1622 3692 32		1	GA 75+ 10 bar(e) JPN 50Hz	
	1622 3692 09		GA 55+ 125 psig HAV		1622 3692 22		1	GA 75+ 10 bar(e) JPN 60Hz	
	1622 3692 05		GA 55+ 150 psig		1622 3692 26		1	GA 75+ 10 bar(e) HAV	
	1622 3692 41		GA 75+ 7.5 bar(e)		1622 3692 08		1	GA 75+ 13 bar(e)	
	1622 3692 41		GA 75+ 7.5 bar(e) JPN 50Hz		1622 3692 08		1	GA 75+ 13 bar(e) JPN 50Hz	
	1622 3692 43		GA 75+ 7.5 bar(e) JPN 60Hz		1621 3692 16		1	GA 75+ 13 bar(e) JPN 60Hz	
	1622 3692 37		GA 75+ 7.5 bar(e) HAV		1622 3692 18		1	GA 75+ 13 bar(e) HAV	
	1622 3692 37		GA 75+ 8 bar(e)		1622 3692 30		1	GA 75+ 100 psig	
	1622 3692 33		GA 75+ 8 bar(e) HAV		1622 3692 08		1	GA 75+ 100 psig HAV	
	1622 3692 31		GA 75+ 10 bar(e)		1622 3692 08		1	GA 75+ 125 psig	
	1622 3692 31		GA 75+ 10 bar(e) JPN 50Hz		1622 3692 18		1	GA 75+ 125 psig HAV	
	1622 3692 21		GA 75+ 10 bar(e) JPN 60Hz		1622 3692 18		1	GA 75+ 150 psig	
	1622 3692 25		GA 75+ 10 bar(e) HAV		1621 3692 16		1	GA 75+ 150 psig HAV	
	1622 3692 07		GA 75+ 13 bar(e)		1621 3692 16		1	GA 75+ 175 psig	
	1622 3692 07		GA 75+ 13 bar(e) JPN 50Hz		1622 3692 14		1	GA 75+ 175 psig HAV	
	1622 3692 15		GA 75+ 13 bar(e) JPN 60Hz		1622 3692 04		1	GA 90 7.5 bar(e)	
	1622 3692 17		GA 75+ 13 bar(e) HAV		1622 3692 42		1	GA 90 7.5 bar(e) HAV	
	1622 3692 29		GA 75+ 100 psig		1622 3692 04		1	GA 90 8 bar(e)	
	1622 3692 07		GA 75+ 100 psig HAV		1622 3692 40		1	GA 90 8 bar(e) HAV	
	1622 3692 07		GA 75+ 125 psig		1622 3692 40		1	GA 90 10 bar(e)	
	1622 3692 17		GA 75+ 125 psig HAV		1622 3692 36		1	GA 90 10 bar(e) HAV	
	1622 3692 17		GA 75+ 150 psig		1622 3692 02		1	GA 90 13 bar(e)	
	1622 3692 15		GA 75+ 150 psig HAV		1622 3692 28		1	GA 90 13 bar(e) HAV	
	1622 3692 15		GA 75+ 175 psig		1622 3692 38		1	GA 90 100 psig	
	1622 3692 13		GA 75+ 175 psig HAV		1622 3692 02		1	GA 90 100 psig HAV	
	1622 3692 03		GA 90 7.5 bar(e)		1622 3692 02		1	GA 90 125 psig	
	1622 3692 41		GA 90 7.5 bar(e) HAV		1622 3692 28		1	GA 90 125 psig HAV	
	1622 3692 03		GA 90 8 bar(e)		1622 3692 28		1	GA 90 150 psig	
	1622 3692 39		GA 90 8 bar(e) HAV		1622 3692 24		1	GA 90 150 psig HAV	
	1622 3692 39		GA 90 10 bar(e)		1622 3692 22		1	GA 90 175 psig	
	1622 3692 35		GA 90 10 bar(e) HAV		1622 3692 18		1	GA 90 175 psig HAV	

2

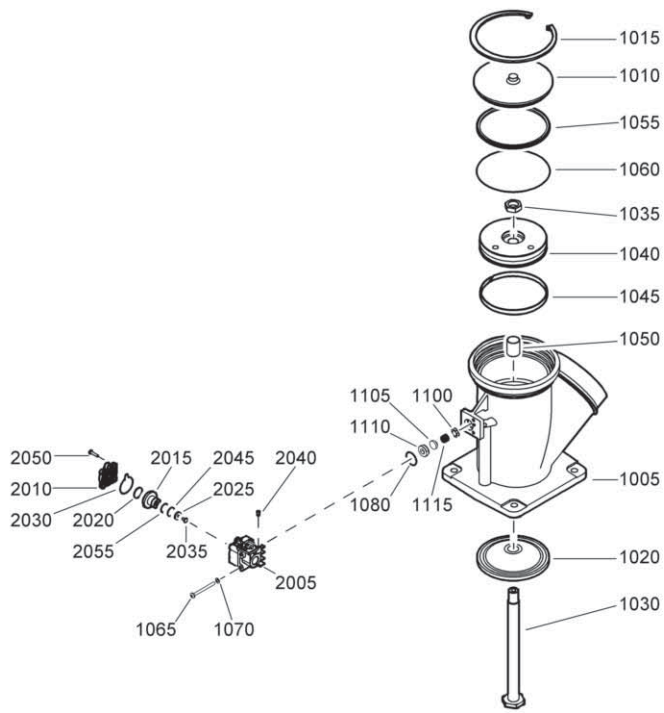


63330_02

Air inlet

Ref.	Part number	Qty	Name	Remarks	Ref.	Part number	Qty	Name	Remarks
1020	1622 0795 00	1	Valve housing		2021	0301 2344 00	4	Washer	
1025	1622 0796 00	1	Spring		2030	0147 1360 03	4	Hexagon bolt	
1030	1622 9639 00	1	Check valve		2050	0347 6120 00	2	Hose clip	
1040	0211 1964 75	4	Cap screw		2060	1622 3631 00	1	Filter plate	
1045	0686 3716 01	1	Hexagon plug		2070	0147 1963 08	2	Hexagon bolt	
1050	0661 1000 38	1	Seal washer		2090	1613 9502 00	1	Air filter	
1070	1613 8907 00	1	Valve body			1613 9503 00	• 1	Filter element	
1075	1613 2357 00	1	Compr.spring		2100	0301 2344 00	2	Washer	
1080		1	Nipple		2110	0147 1363 03	2	Hexagon bolt	
	1622 0958 00		7.5 bar(e)		2120	0575 1216 62	1	Hose	
	1622 0958 00		10 bar(e)		2130	1079 5840 03	1	Nipple	
	1622 0958 01		13 bar(e)		2140	0661 1000 40	1	Seal washer	
	1622 0958 00		100 psig		2200	1089 0574 12	1	Temp.sensor	
	1622 0958 00		150 psig		2210	0989 4220 15	1	Grommet	
	1622 0958 01		175 psig			1622 0894 80	1	Hose assembly	
1085	0661 1000 44	1	Seal washer		3010	1622 0894 00	• 1	Hose	
1090	1622 1041 00	1	Piston		3020	1613 7912 01	• 1	Indicator	
1095	0686 3716 07	1	Hexagon plug		4010	1622 3619 00	1	Pipe	
1100	0661 1000 44	1	Seal washer		4020	0663 7138 00	1	O-ring	
1105	1079 5840 19	1	Nipple		4030	0147 1363 03	2	Hexagon bolt	
1110	0661 1000 39	1	Seal washer		4040	0301 2344 00	2	Washer	
1115	1622 0977 00	1	Gasket		4050	0663 7138 00	1	O-ring	
1120	1089 0574 55	1	Temp.sensor		4060	0147 1363 03	2	Hexagon bolt	
2010	<<<< >>>>	1	Unloader assembly		4070	0301 2344 00	2	Washer	
2020	0663 2107 37	1	O-ring						

3



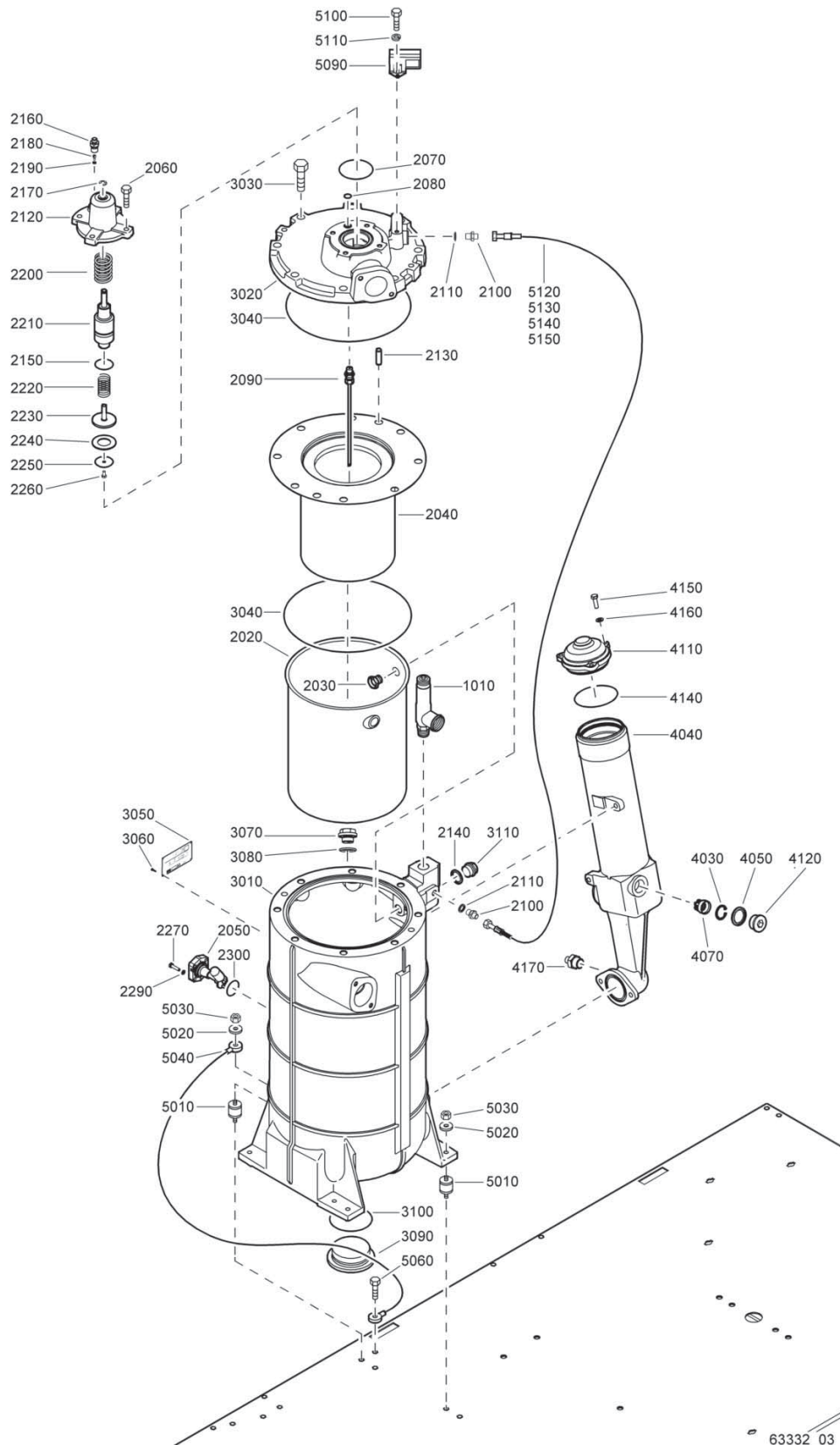
63331_20

Unloader valve

3

Ref.	Part number	Qty	Name	Remarks	Ref.	Part number	Qty	Name	Remarks
	1622 3648 80	1	Unloader assembly		1105	1622 3183 00	• 1	Seal	
1005	1622 3648 00	• 1	Housing		1110	1622 3184 00	• 1	Bushing	
1010	1622 3794 00	• 1	Cover		1115	1622 3185 00	• 1	Spring	
1015	0335 2182 00	• 1	Int.circlip			1622 3694 80	• 1	Blow off valve	
1020	1622 3686 00	• 1	Valve		2005	1622 3694 00	•• 1	Housing	
1030	1622 3688 00	• 1	Rod		2010	1622 3694 01	•• 1	Cover	
1035	0261 1099 32	• 1	Hexagon nut		2015	1622 3694 02	•• 1	Piston	
1040	1622 3687 00	• 1	Piston		2020	1513 0477 00	•• 1	Piston ring	
1045	1622 3689 00	• 1	Guidance tape		2025	1622 3694 03	•• 1	Seal	
1050	1622 3690 00	• 1	Bushing		2030	1622 3694 04	•• 1	Seal	
1055	1622 3691 00	• 1	Quadring		2035	1622 3694 05	•• 1	Rivet	
1060	0663 7151 00	• 1	O-ring		2040	1622 3694 06	•• 2	Insert	
1065	0160 0996 86	• 2	Cross rec screw		2045	1622 3694 07	•• 1	Seal	
1070	0301 2318 00	• 2	Washer		2050	0226 3300 18	•• 4	Bolt	
1080	0663 2111 55	• 1	O-ring		2055	0663 2112 69	•• 1	O-ring	
1100	1622 3182 00	• 1	Guide						

4



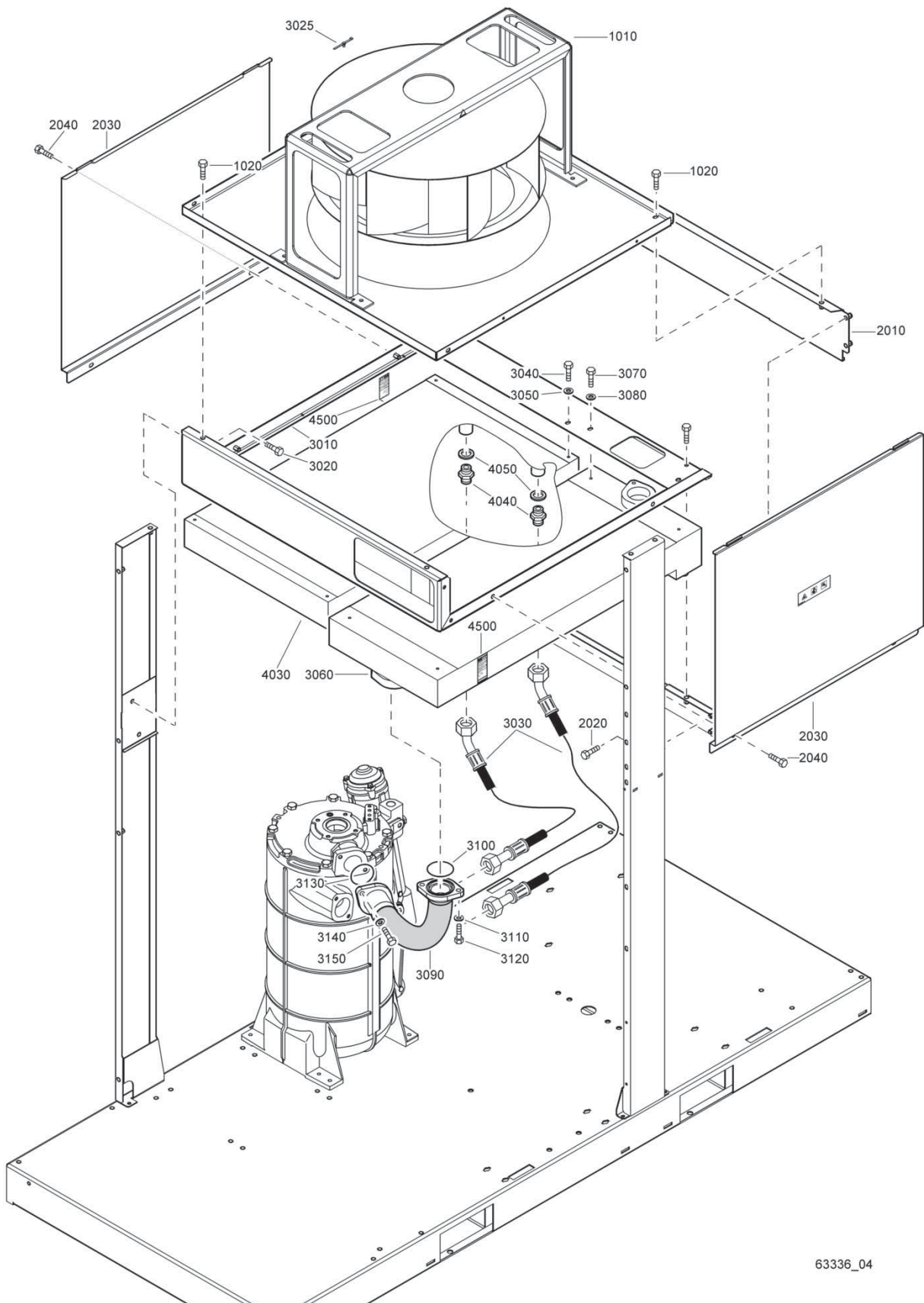
63332_03

Air receiver

4

Ref.	Part number	Qty	Name	Remarks	Ref.	Part number	Qty	Name	Remarks
1010		1	Safety valve		3010	1622 3658 00	•• 1	Vessel	
	1202 5749 00		7.5 bar(e)		3020		•• 1	Valve housing	
	1202 5749 00		10 bar(e)			1622 3655 00		CE/ASME	
	1202 5401 00		13 bar(e)			1622 3655 00		LL/DIR	
	1613 5452 00		100 psig			1622 3655 00		MOL	
	1613 5452 00		150 psig			1622 3655 00		MOM	
	1613 7810 00		175 psig			1622 5087 00		SQL	
		1	Vessel ass'y		3030	0147 1961 17	•• 8	Hexagon bolt	
	1622 3695 99		CE/ASME		3040	0663 2107 49	•• 2	O-ring	
	1622 3695 82		LL/DIR		3050		•• 1	Dataplate vessel	
	1622 3695 85		MOL			1622 0003 00		CE/ASME	
	1622 3695 95		MOM			1622 0003 01		LL/DIR	
	1622 5562 86		SQL			1622 0003 01		MOL	
2020	1622 3657 00	• 1	Shield			1622 0003 01		MOM	
2030	1613 8103 00	• 1	Bushing			1613 9349 00		SQL	
2040	1622 3656 00	• 1	Oil separator		3060	0244 4184 00	•• 4	Drive screw	
2050	1622 3659 00	• 1	Oil level gauge		3070	1202 8992 00	•• 1	Plug	
2060	0147 1365 03	• 4	Hex. Bolt		3080	0663 2102 15	•• 1	O-ring	
2070	0663 7139 00	• 1	O-ring		3090	1622 3660 00	•• 1	Plug	
2080	0663 3120 00	• 1	O-ring		3100	0663 2111 17	•• 1	O-ring	
2090	1622 3654 80	• 1	Scavenge line		3110	0686 4206 00	•• 1	Hex.plug	
2100	1079 5840 18	• 1	Nipple			1622 3650 80	• 1	Oil filter pipe	
2110	0661 1000 38	• 1	Seal washer		4030	0335 2131 00	•• 1	Circlip	
2120	1622 3661 00	• 1	Cover		4040	1622 3650 00	•• 1	Filter pipe housing	
2130	0101 2465 00	• 2	Parallel pin		4050	0661 1000 44	•• 1	Seal washer	
2140	0661 1000 40	• 1	Seal washer		4070	1622 3653 00	•• 1	Bypass valve	
2150	0663 2101 01	• 1	O-ring		4110	1622 4614 00	•• 1	Cover	
2160	1622 3693 00	• 1	Nipple		4120	0686 6448 00	•• 1	Hexagon plug	
2170	0335 3111 00	• 1	Retaining ring		4140	0663 2106 16	•• 1	O-ring 94,5 x 3	
2180	1613 9005 01	• 1	Non return valve		4150	0147 1325 03	•• 3	Hex.bolt	
2190	0663 2108 11	• 1	O-ring		4160	0301 2335 00	•• 3	Washer	
2200	1622 3664 00	• 1	Spring		4170	0603 4100 42	•• 1	Nipple	
2210	1622 3663 00	• 1	Piston		5010	0392 1100 28	4	Vibration damper	
2220	1622 3662 00	• 1	Spring		5020	0301 2335 00	4	Washer	
2230	1613 3221 00	• 1	Piston valve		5030	0291 1110 00	4	Lock nut	
2240	1613 3223 01	• 1	Washer		5040	1613 8967 12	1	Cable	
2250	1613 3222 00	• 1	Washer		5060	0147 1963 08	1	Hexagon bolt	
2260	0147 1244 03	• 1	Hexagon bolt		5090	1089 0575 43	1	Press.transducer	
2270	0147 1249 03	• 4	Hexagon bolt		5100	0147 1322 03	2	Hexagon bolt	
2280	0571 0035 85	• 1	Hexagon nipple		5110	0301 2344 00	2	Washer	
2290	0301 2321 00	• 4	Washer		5120	0575 1205 11	1	Hose assembly	
2300	0663 2113 24	• 1	O-ring		5130	0603 4100 42	1	Nipple	
		• 1	Vessel		5140	0852 0010 22	1	Ball valve	
	1622 3658 99		CE/ASME		5150	0687 3103 00	1	Pipe cap	
	1622 3658 82		LL/DIR						
	1622 3658 85		MOL						
	1622 3658 95		MOM						
	1622 3658 86		SQL						

5



63336_04

63336_04

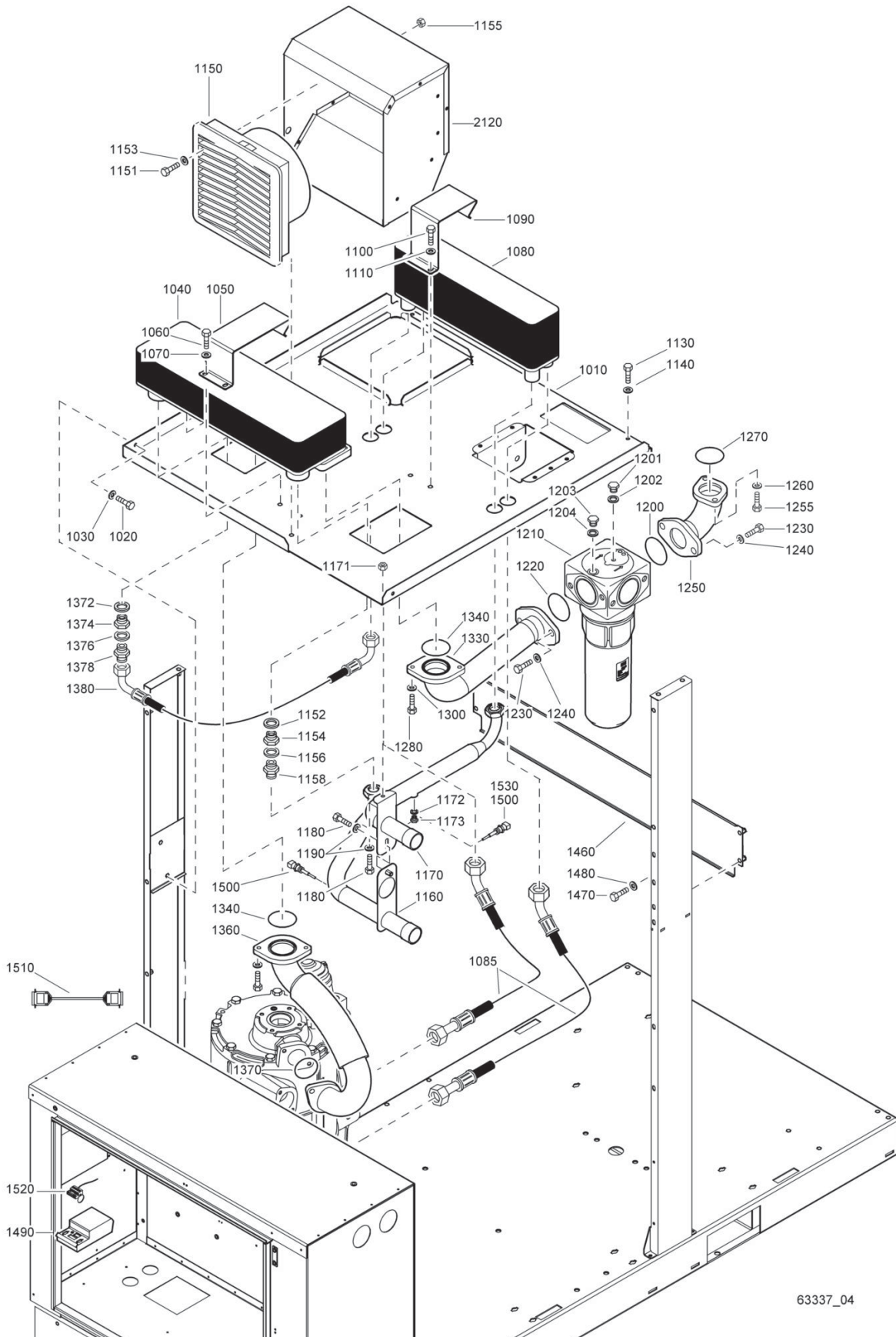
Air flow and cooling system - GA (A)

5

Ref.	Part number	Qty	Name	Remarks	Ref.	Part number	Qty	Name	Remarks
1010	1622 3646 15	1	Fan ass'y GA 55+ (A) 200V/60Hz CSA/UL		1020	0147 1963 08	4	Hexagon bolt	
	1622 3646 01		GA 55+ (A) 230V/50Hz IEC		2010	1622 3625 00	1	Fan support	
	1622 3646 11		GA 55+ (A) 230V/60Hz IEC		2020	0147 1963 08	4	Hexagon bolt	
	1622 3646 11		GA 55+ (A) 230V/60Hz CSA/UL		2030	1622 3628 80	2	Plate	1)
	1622 3646 11		GA 55+ (A) 380V/60Hz IEC		2040	0147 1963 08	4	Hexagon bolt	
	1622 3646 01		GA 55+ (A) 400V/50Hz IEC		3010	1622 3779 00	1	Cooler plate	
	1622 3646 11		GA 55+ (A) 460V/60Hz IEC			1622 3780 00		GA 55+ (A)	
	1622 3646 11		GA 55+ (A) 460V/60Hz CSA/UL			1622 3781 00		GA 75+ (A)	
	1622 3646 03		GA 55+ (A) 500V/50Hz IEC		3020	0147 1963 08	4	Hexagon bolt	
	1622 3646 12		GA 55+ (A) 575V/60Hz CSA/UL		3025	0348 0102 11	3	Cable tie	
	1622 3646 15		GA 75+ (A) 200V/60Hz CSA/UL		3030	0574 9918 14	2	Hose assembly	
	1622 3646 01		GA 75+ (A) 230V/50Hz IEC		3040	0147 1323 03	4	Hexagon bolt	
	1622 3646 11		GA 75+ (A) 230V/60Hz IEC		3050	0300 0274 34	4	Washer	
	1622 3646 11		GA 75+ (A) 230V/60Hz CSA/UL		3060	1622 3767 00	1	Aftercooler	
	1622 3646 11		GA 75+ (A) 380V/60Hz IEC			1622 3769 00		GA 55+ (A)	
	1622 3646 01		GA 75+ (A) 400V/50Hz IEC			1622 3771 00		GA 75+ (A)	
	1622 3646 11		GA 75+ (A) 460V/60Hz IEC			1622 3797 00	• 1	Decal	
	1622 3646 11		GA 75+ (A) 460V/60Hz CSA/UL		3070	0147 1323 03	4	Hexagon bolt	
	1622 3646 03		GA 75+ (A) 500V/50Hz IEC		3080	0300 0274 34	4	Washer	
	1622 3646 12		GA 75+ (A) 575V/60Hz CSA/UL		3090	1622 3787 00	1	Pipe	
	1622 3646 33		GA 90 (A) 200V/60Hz CSA/ UL		3100	0663 7138 00	1	O-ring	
	1622 3646 22		GA 90 (A) 230V/50Hz IEC		3110	0301 2344 00	2	Washer	
	1622 3646 31		GA 90 (A) 230V/60Hz IEC		3120	0147 1363 03	2	Hexagon bolt	
	1622 3646 31		GA 90 (A) 230V/60Hz CSA/ UL		3130	0663 7138 00	1	O-ring	
	1622 3646 31		GA 90 (A) 380V/60Hz IEC		3140	0301 2344 00	2	Washer	
	1622 3646 22		GA 90 (A) 400V/50Hz IEC		3150	0147 1363 03	2	Hexagon bolt	
	1622 3646 31		GA 90 (A) 460V/60Hz IEC		4030	1622 3766 00	• 1	Oilcooler	
	1622 3646 31		GA 90 (A) 460V/60Hz CSA/ UL			1622 3768 00		GA 55+ (A)	
	1622 3646 24		GA 90 (A) 500V/50Hz IEC			1622 3770 00		GA 75+ (A)	
	1622 3646 32		GA 90 (A) 575V/60Hz CSA/ UL		4040	2250 4983 00	•• 2	Nipple	
					4050	0661 1000 44	•• 2	Seal washer	
					4500	1622 3797 00	•• 1	Decal	

1) Lined with / Bekleed met / Beklädd med / Ausgekleidet mit
/Garnir de / Rivestido de / Allineato con / Foret med /
Revestido com / Kledd med / Vuorattu :
Foam: 0395 6001 67(AR) 30 x 2040 x 1650

6



63337_04

Air flow and cooling system - GA (W)

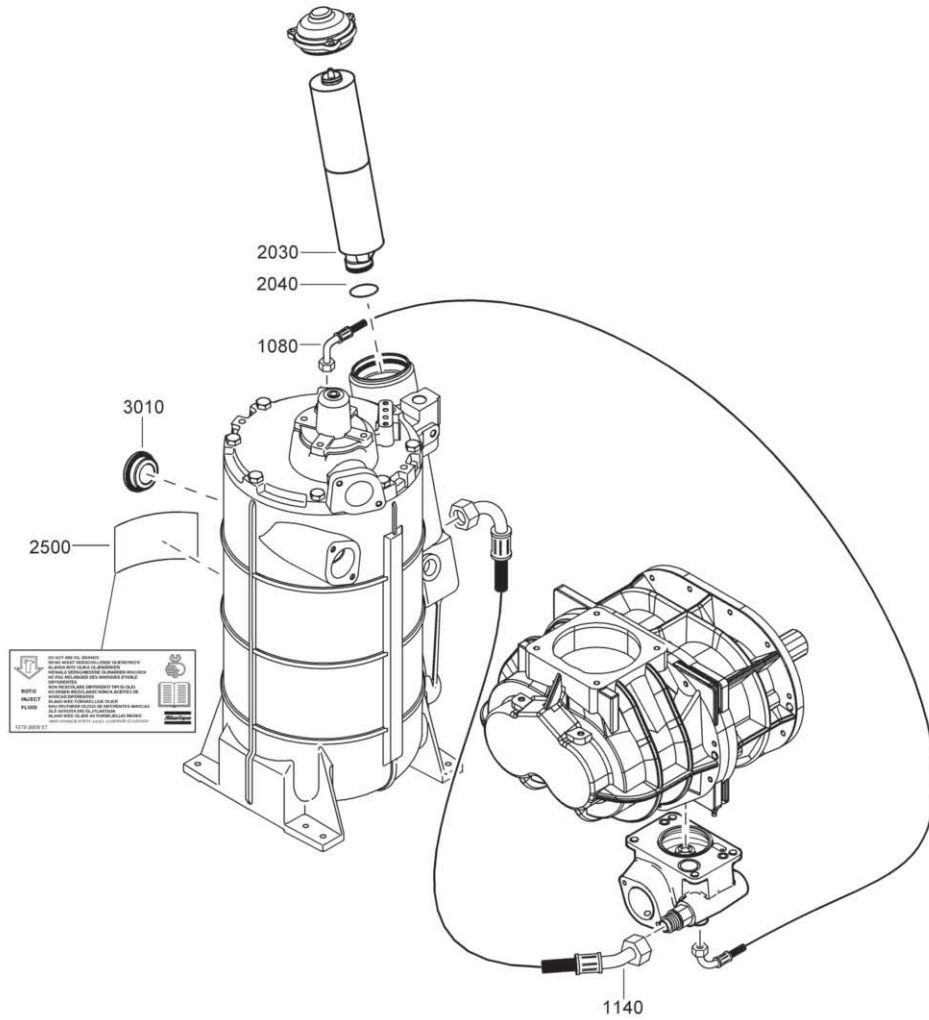
6

Ref.	Part number	Qty	Name	Remarks	Ref.	Part number	Qty	Name	Remarks
1010	1622 4640 81	1	Cooler plate		1220	0663 3143 00	1	O-ring	
1020	0147 1962 72	4	Hexagon bolt		1230	0147 1475 00	4	Hexagon bolt	
1030	0301 2335 00	4	Washer		1240	0301 2378 00	4	Washer	
1040	1622 4652 80	1	Aftercooler		1250	1622 4641 80	1	Pipe	
1050	1622 4642 00	1	Support		1255	0147 1364 03	2	Hexagon bolt	
1060	0147 1962 72	2	Hexagon bolt		1260	0301 2344 00	2	Washer	
1070	0301 2335 00	2	Washer		1270	0663 7138 00	1	O-ring	
1080	1622 4653 80	1	Oilcooler		1280	0147 1476 03	2	Hexagon bolt	
1085	0574 9918 15	2	Hose assembly		1300	0301 2344 00	2	Washer	
1090	1622 4642 02	1	Support		1330	1622 4643 80	1	Pipe	
1100	0147 1962 72	2	Hexagon bolt		1340	0663 7138 00	2	O-ring	
1110	0301 2335 00	2	Washer		1360	1622 4644 00	1	Pipe	
1130	0147 1326 03	4	Hexagon bolt		1370	0663 7138 00	1	O-ring	
1140	0301 2335 00	4	Washer		1372	0661 1000 46	1	Seal washer	
1150	1089 9556 28	1	Fan		1374	0605 8700 24	1	Bushing	
1151	0160 6039 00	4	Screw		1376	0661 1000 44	1	Seal washer	
1152	0661 1000 46	1	Seal washer		1378	2250 4983 00	1	Nipple	
1153	0301 2315 00	4	Washer		1380	0574 9874 02	1	Hose assembly	
1154	0605 8700 24	1	Bushing		1460	1622 4650 80	1	Plate	
1155	0261 2106 00	8	Nut		1470	0147 1962 72	4	Hexagon bolt	
1156	0661 1000 44	1	Seal washer		1480	0301 2335 00	4	Washer	
1158	2250 4983 00	1	Nipple		1490	1900 0710 41	1	AIE exp. module	
1160	1622 4646 80	1	Pipe		1500	1089 0574 49	2	Temp. sensor	
1170	1622 4645 81	1	Pipe		1510	1622 0661 01	1	Cable	
1171	0291 1110 00	1	Lock nut		1520	1088 0031 04	1	Connector	
1172	0661 1000 38	1	Seal washer		1530	1622 0663 03	1	Cable temp.sensor	
1173	0686 3716 01	1	Hex. plug		2120	1622 4649 80	1	Air duct assy 1)	
1180	0147 1962 72	2	Hexagon bolt			1622 4649 10	• 1	Plate	
1190	0301 2335 00	2	Washer			1622 4649 13	• 1	Plate	
1200	0663 3143 00	1	O-ring			1622 4649 14	• 1	Plate	
1201	0686 3716 01	2	Hex. plug			1622 4649 11	• 6	Plate	
1202	0661 1000 38	2	Seal washer			0129 3110 00	• 26	Rivet	
1203	0686 3716 02	1	Hex. plug			1622 4649 15	• 2	Support	
1204	0661 1000 39	1	Seal washer						
1210	1613 9370 80	1	WSD 250						
	0663 6147 00	• 1	O-ring 114,5 x 3						
	0663 6136 00	• 1	O-ring 59,5 x 3						
	0663 2133 00	• 1	O-ring 39,2 x 3						
	0663 2111 27	• 1	O-ring 31,5 x 3						

1) Lined with / Bekleed met / Beklädd med / Ausgekleidet mit / Garnir de / Rivestido de / Allineato con / Foret med / Revestido com / Kledd med / Vuorattu :
Foam: 0395 6001 67(AR) 30 x 2040 x 1650

7

Oil system

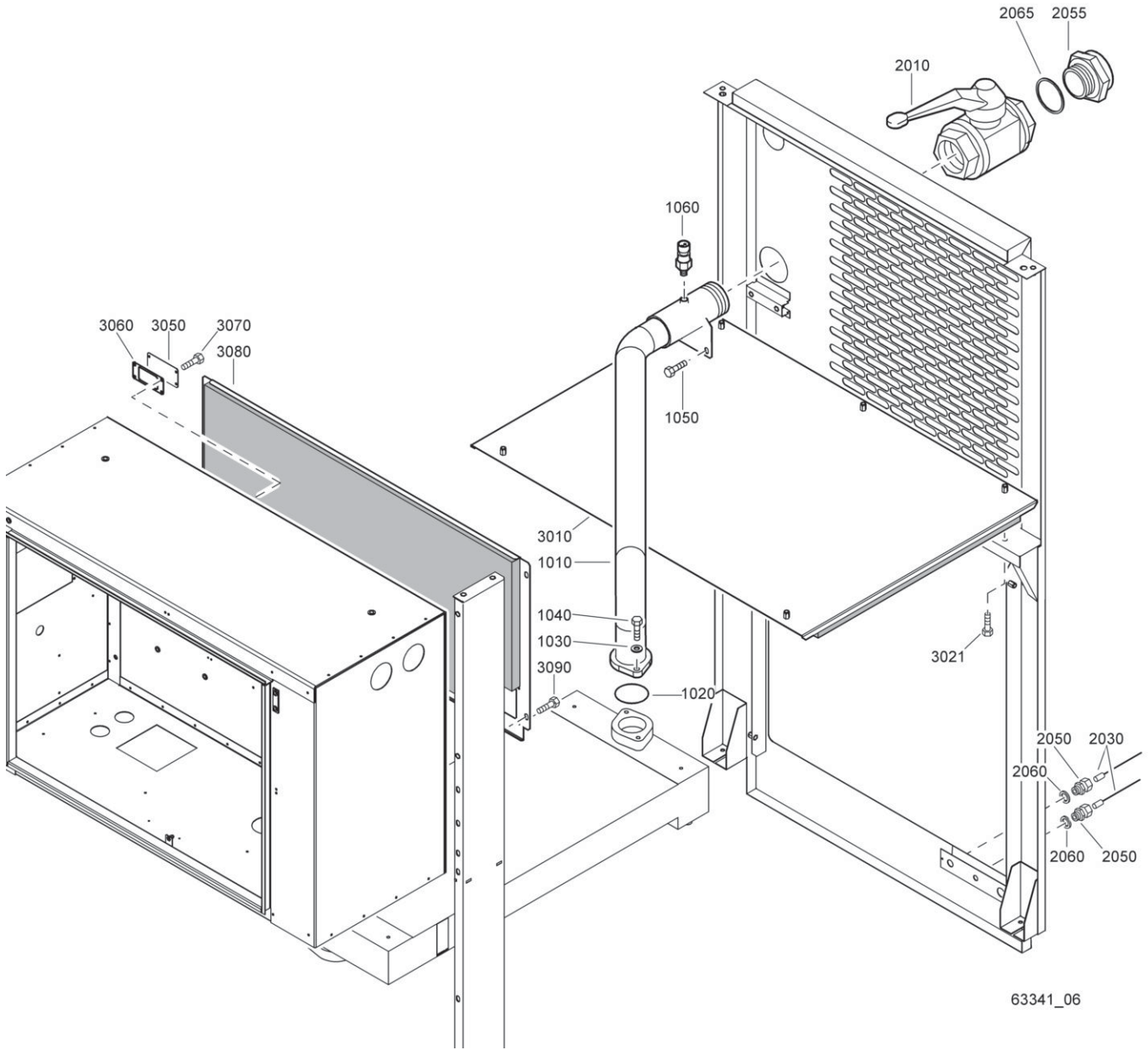


63338_05

63338_05

Ref.	Part number	Qty	Name	Remarks	Ref.	Part number	Qty	Name	Remarks
1080	0575 1244 50	1	Hose assembly				1	Thermostat assembly	
1140	0574 9919 01	1	Hose assembly			1622 3759 80		7.5 bar(e)	
		1	Oil filter element assy			1622 3759 80		10 bar(e)	
	1622 3652 80		4000 Hrs			1622 3759 81		13 bar(e)	
	1622 4601 80		8000 Hrs			1622 3759 80		100 psig	
2030		• 1	Oil filter element			1622 3759 80		150 psig	
	1622 3652 00		4000 Hrs			1622 3759 81		175 psig	
	1622 4601 00		8000 Hrs		3010		• 1	Plug	
2040	0663 2113 23	• 1	O-ring			1622 3759 00		7.5 bar(e)	
2500		1	Label			1622 3759 00		10 bar(e)	
	1079 9909 57		4000 Hrs			1622 3759 01		13 bar(e)	
	1079 9920 76		8000 Hrs			1622 3759 00		100 psig	
						1622 3759 00		150 psig	
						1622 3759 01		175 psig	

Air outlet - Pack GA (A)



63341_06

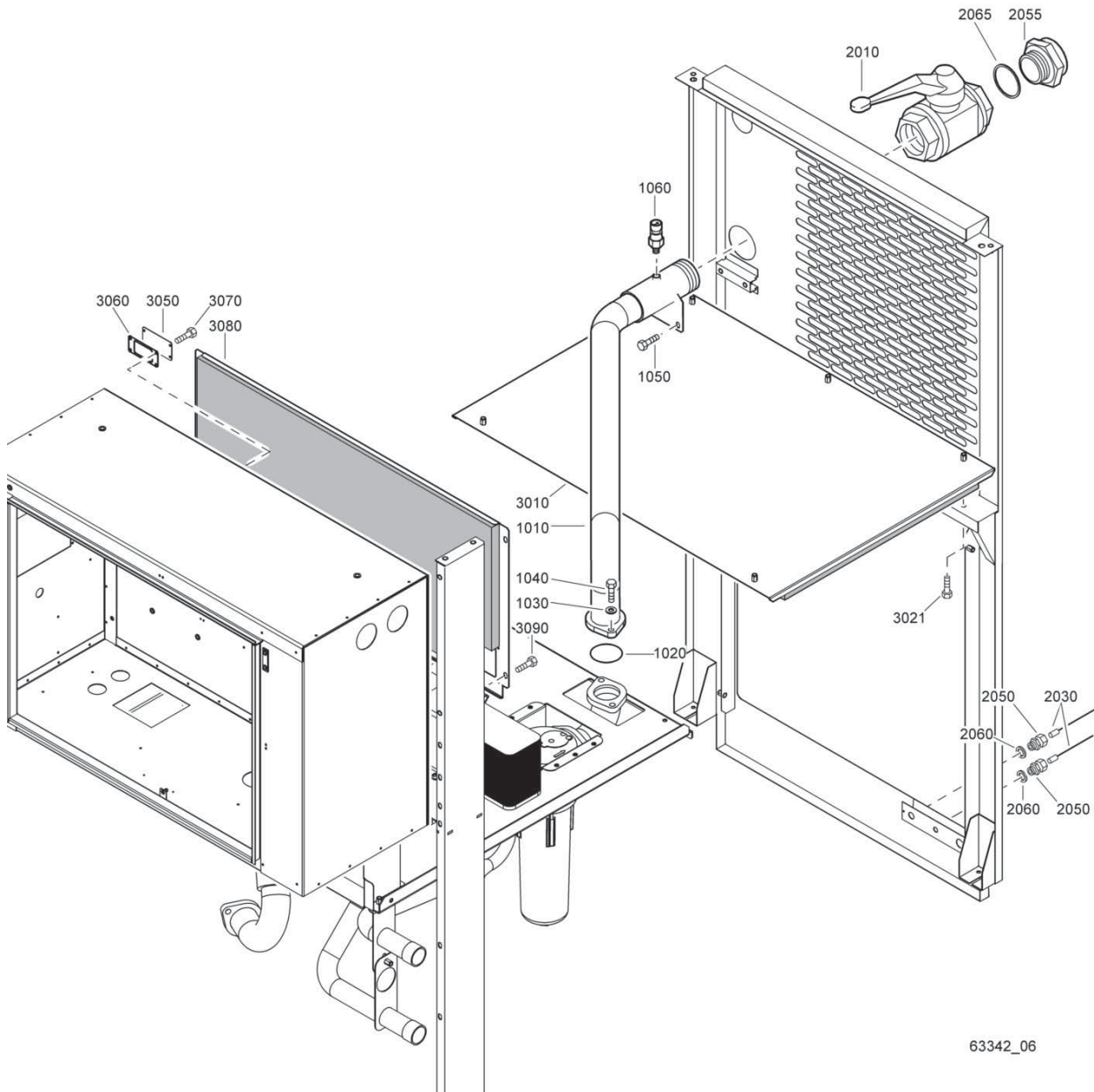
63341_06

Ref.	Part number	Qty	Name	Remarks	Ref.	Part number	Qty	Name	Remarks
1010	1622 3786 00	1	Pipe		3010	1622 3629 80	1	Plate ass'y	1)
1020	0663 7138 00	1	O-ring		3021	0147 1963 08	6	Hexagon bolt	
1030	0301 2344 00	2	Washer		3050	1622 3796 00	1	Cover	
1040	0147 1363 03	2	Hexagon bolt		3060	1622 3795 00	1	Seal	
1050	0147 1963 08	2	Hexagon bolt		3070	0160 6040 00	4	Screw	
1060	1089 0575 54	1	Pressure transducer		3080	1622 3626 81	1	Plate	1)
2010	0852 0010 20	1	Ball valve		3090	0147 1963 08	4	Hexagon bolt	
2030	0070 6002 05	AR	Tube						
2050	0581 0000 35	2	Coupling						
2055		1	Adaptor						
	1614 5941 00		NPT						
2060	0661 1000 38	2	Seal washer						
2065		1	Flat gasket						
	0653 1331 00		NPT						

1) Lined with / Bekleed met / Beklädd med / Ausgekleidet mit / Garnir de / Rivestido de / Allineato con / Foret med / Revestido com / Kledd med / Vuorattu :
Foam: 0395 6001 67(AR) 30 x 2040 x 1650

9

Air outlet - Pack GA (W)

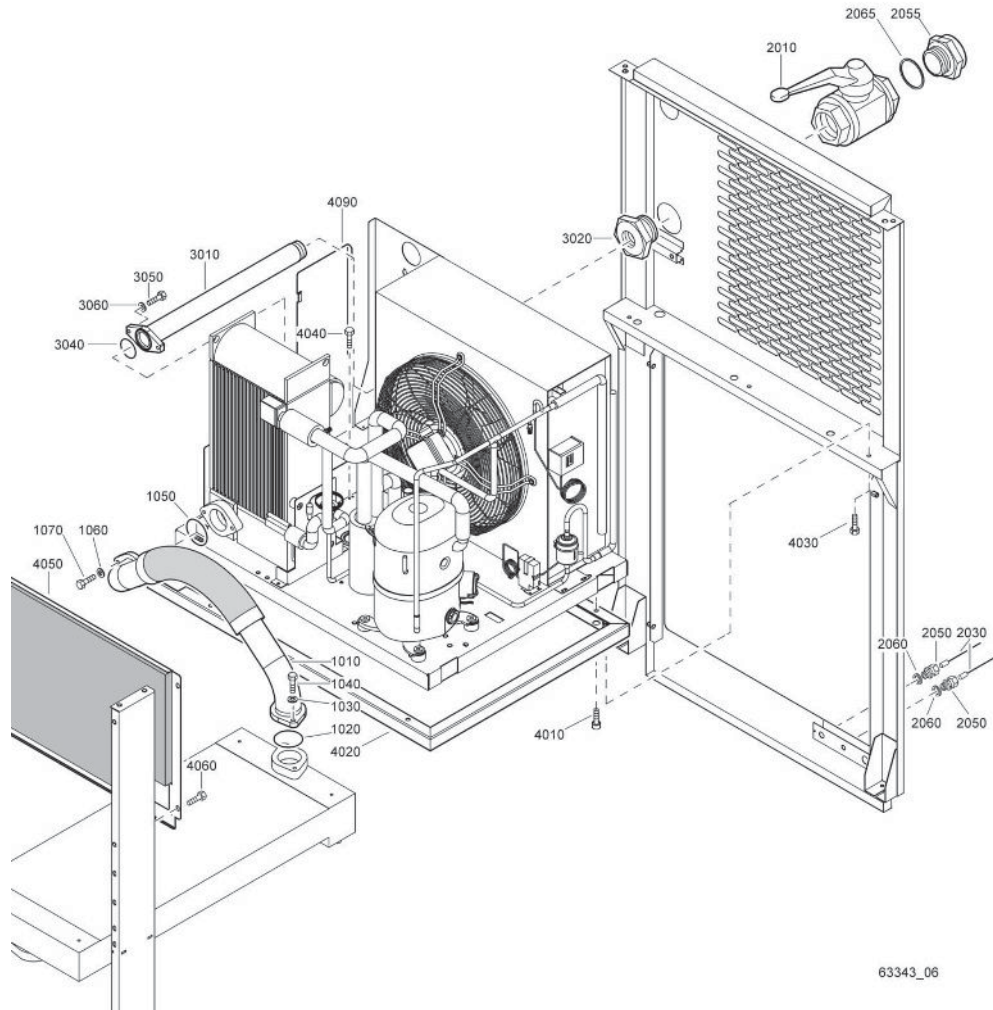


63342_06

63342_06

Ref.	Part number	Qty	Name	Remarks	Ref.	Part number	Qty	Name	Remarks
1010	1622 3786 00	1	Pipe		3010	1622 3629 80	1	Plate ass'y	1)
1020	0663 7138 00	1	O-ring		3021	0147 1963 08	6	Hexagon bolt	
1030	0301 2344 00	2	Washer		3050	1622 3796 00	1	Cover	
1040	0147 1363 03	2	Hexagon bolt		3060	1622 3795 00	1	Seal	
1050	0147 1963 08	2	Hexagon bolt		3070	0160 6040 00	4	Screw	
1060	1089 0575 54	1	Pressure transducer		3080	1622 3626 81	1	Plate	1)
2010	0852 0010 20	1	Ball valve		3090	0147 1963 08	4	Hexagon bolt	
2030	0070 6002 05	AR	Tube		1) Lined with / Bekleed met / Beklädd med / Ausgekleidet mit / Garnir de / Rivestido de / Allineato con / Foret med / Revestido com / Kledd med / Vuorattu : Foam: 0395 6001 67(AR) 30 x 2040 x 1650				
2050	0581 0000 35	2	Coupling						
2055		1	Adaptor						
	1614 5941 00		NPT						
2060	0661 1000 38	2	Seal washer						
2065		1	Flat gasket						
	0653 1331 00		NPT						

Air outlet - Full Feature - GA (A)



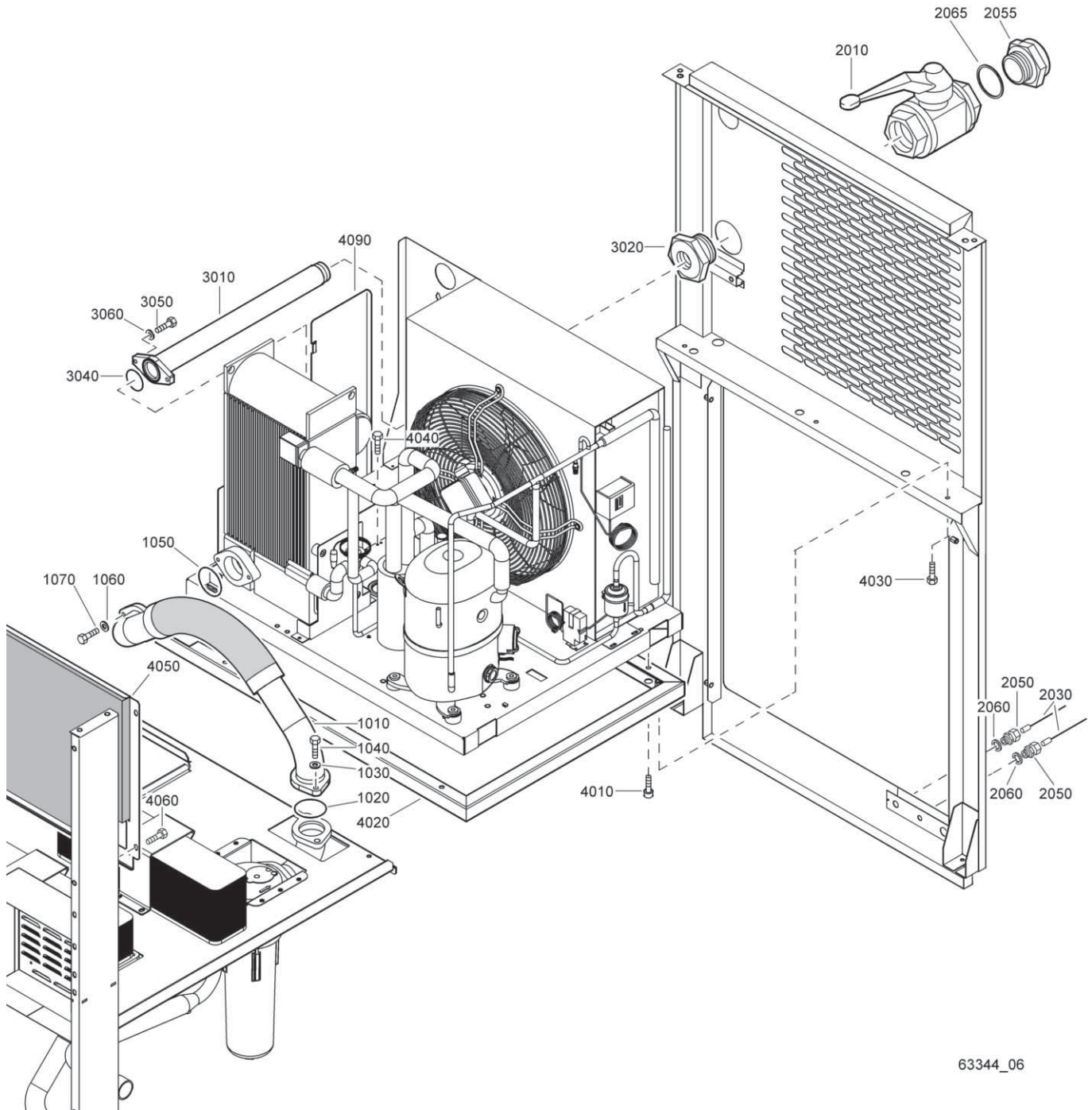
63343_06

63343_06

Ref.	Part number	Qty	Name	Remarks	Ref.	Part number	Qty	Name	Remarks
1010	1622 3785 00	1	Pipe		3050		2	Hexagon bolt	
1020	0663 7138 00	1	O-ring		0147 1326 03			ID 120	
1030	0301 2344 00	2	Washer		0147 1326 03			ID 170	
1040	0147 1363 03	2	Hexagon bolt		0147 1364 03			ID 245	
1050	0663 7138 00	1	O-ring		0147 1364 03			ID 285	
1060	0301 2344 00	2	Washer			3060	2	Washer	
1070	0147 1364 03	2	Hexagon bolt		0301 2335 00			ID 120	
2010	0852 0010 20	1	Ball valve		0301 2335 00			ID 170	
2030	0070 6002 05	AR	Tube		0301 2344 00			ID 245	
2050	0581 0000 35	2	Coupling		0301 2344 00			ID 285	
2055		1	Adaptor		4010		6	Cap screw	
	1614 5941 00		NPT		0211 1325 03			ID 120	
2060	0661 1000 38	2	Seal washer		0211 1325 03			ID 170	
2065		1	Flat gasket		4020		1	Dryer frame	
	0653 1331 00		NPT		1622 3643 00			ID 120	
3010		1	Outlet pipe		1622 3643 00			ID 170	
	1622 4627 01		ID 120		4030	0147 1963 08	6	Hexagon bolt	
	1622 4627 01		ID 170		4040	0160 6040 00	4	Screw	
	1622 4626 01		ID 245		4050	1622 3626 80	1	Plate	1)
	1622 4626 01		ID 285		4060	0147 1963 08	4	Hexagon bolt	
3020		1	Bushing		4090		1	Plate	
	0605 8300 72		ID 120		1622 4636 00			ID 120	
	0605 8300 72		ID 170		1622 4636 00			ID 170	
3040		1	O-ring						
	0663 2104 75		ID 120						
	0663 2104 75		ID 170						
	0663 2104 98		ID 245						
	0663 2104 98		ID 285						

1) Lined with / Bekleed met / Beklädd med / Ausgekleidet mit / Garnir de / Rivestido de / Allineato con / Foret med / Revestido com / Kledd med / Vuorattu :
Foam: 0395 6001 67(AR) 30 x 2040 x 1650

11



63344_06

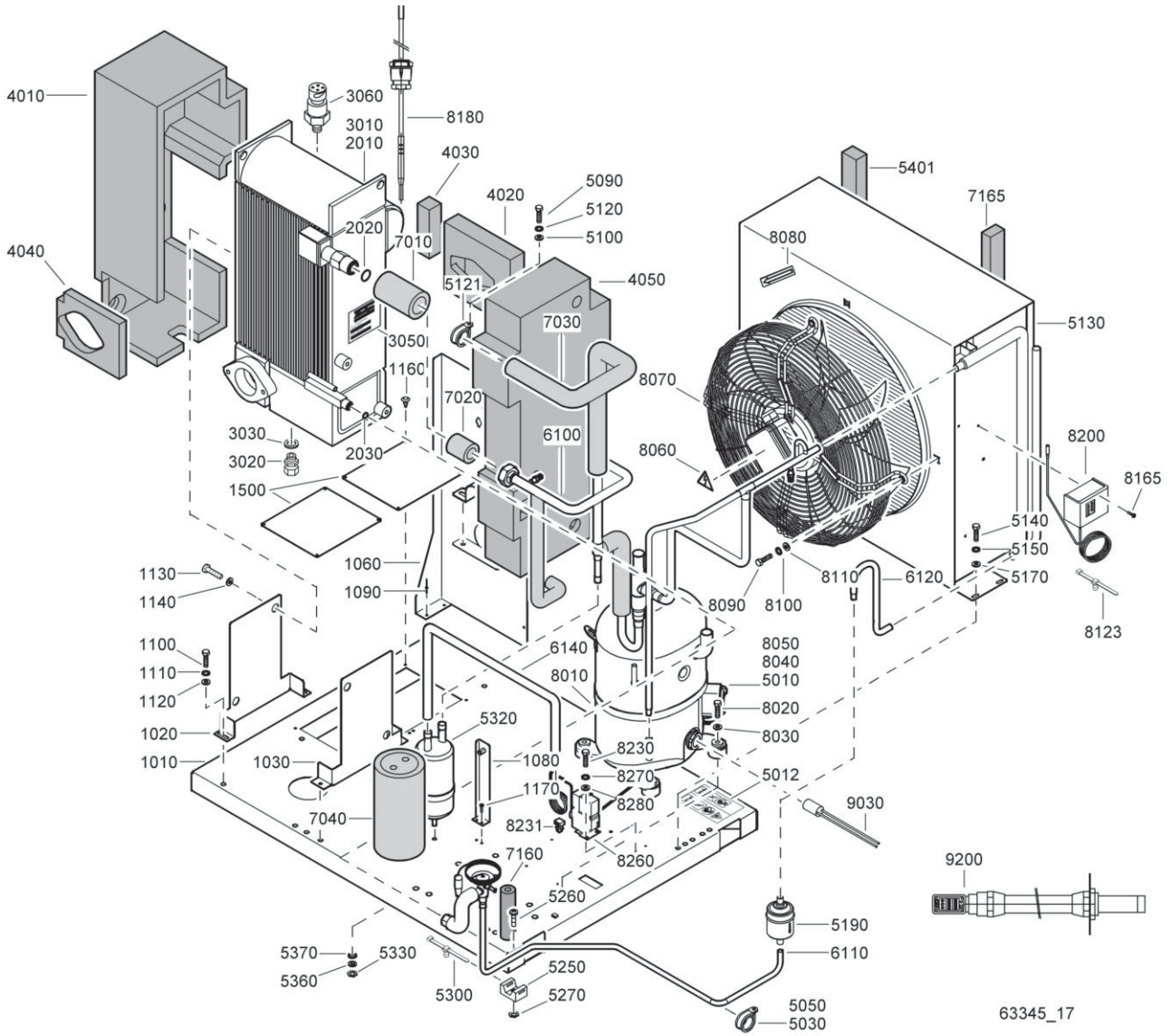
Air outlet - Full Feature - GA (W)

11

Ref.	Part number	Qty	Name	Remarks	Ref.	Part number	Qty	Name	Remarks
1010	1622 3785 00	1	Pipe		3050		2	Hexagon bolt	
1020	0663 7138 00	1	O-ring			0147 1326 03		ID 120	
1030	0301 2344 00	2	Washer			0147 1326 03		ID 170	
1040	0147 1363 03	2	Hexagon bolt			0147 1364 03		ID 245	
1050	0663 7138 00	1	O-ring			0147 1364 03		ID 285	
1060	0301 2344 00	2	Washer		3060		2	Washer	
1070	0147 1364 03	2	Hexagon bolt			0301 2335 00		ID 120	
2010	0852 0010 20	1	Ball valve			0301 2335 00		ID 170	
2030	0070 6002 05	AR	Tube			0301 2344 00		ID 245	
2050	0581 0000 35	2	Coupling			0301 2344 00		ID 285	
2055		1	Adaptor		4010		6	Cap screw	
	1614 5941 00		NPT			0211 1325 03		ID 120	
2060	0661 1000 38	2	Seal washer			0211 1325 03		ID 170	
2065		1	Flat gasket		4020		1	Dryer frame	
	0653 1331 00		NPT			1622 3643 00		ID 120	
3010		1	Outlet pipe			1622 3643 00		ID 170	
	1622 4627 01		ID 120		4030	0147 1963 08	6	Hexagon bolt	
	1622 4627 01		ID 170		4040	0160 6040 00	4	Screw	
	1622 4626 01		ID 245		4050	1622 3626 80	1	Plate	1)
	1622 4626 01		ID 285		4060	0147 1963 08	4	Hexagon bolt	
3020		1	Bushing		4090		1	Plate	
	0605 8300 72		ID 120			1622 4636 00		ID 120	
	0605 8300 72		ID 170			1622 4636 00		ID 170	
3040		1	O-ring						
	0663 2104 75		ID 120						
	0663 2104 75		ID 170						
	0663 2104 98		ID 245						
	0663 2104 98		ID 285						

1) Lined with / Bekleed met / Beklädd med / Ausgekleidet mit
 / Garnir de / Rivestido de / Allineato con / Foret med /
 Revestido com / Kledd med / Vuorattu :
 Foam: 0395 6001 67(AR) 30 x 2040 x 1650

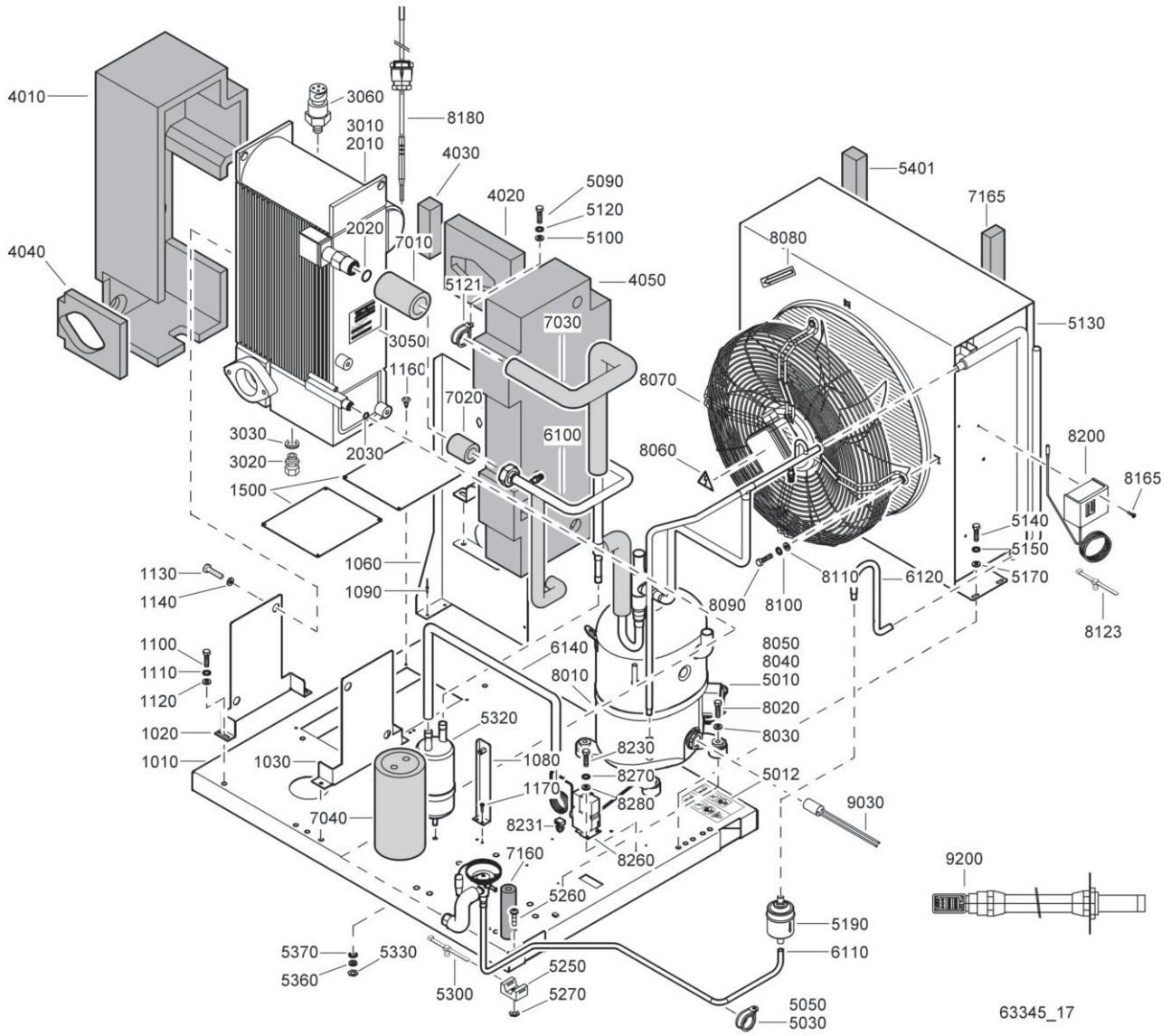
12



Air dryer - Full Feature

Ref.	Part number	Qty	Name	Remarks	Ref.	Part number	Qty	Name	Remarks
		1	Air dryer						
	8092 2650 68		GA 55+ ID 120 460V/60Hz		1020		• 1	Support	
	8092 2650 76		GA 55+ ID 170 200-230V/ 50Hz			1624 2370 00		ID 120	
	8092 2651 00		GA 55+ ID 170 200-230V/ 60Hz			1624 2370 00		ID 170	
	8092 2651 34		GA 55+ ID 170 380V/60Hz			1624 2307 00		ID 245	
	8092 2650 84		GA 55+ ID 170 400V/50Hz			1624 2307 00		ID 285	
	8092 2651 18		GA 55+ ID 170 460V/60Hz		1030		• 1	Support	
	8092 2650 92		GA 55+ ID 170 500V/50Hz			1624 2371 00		ID 120	
	8092 2651 26		GA 55+ ID 170 575V/60Hz			1624 2371 00		ID 170	
	8092 2651 42		GA 55+ ID 245 400V/50Hz			1624 2308 00		ID 245	
	8092 2651 59		GA 55+ ID 245 460V/60Hz			1624 2308 00		ID 285	
	8092 2651 91		GA 55+ ID 285 200- 230V60Hz		1060		• 1	Plate assy	
	8092 2652 25		GA 55+ ID 285 380V/60Hz			1624 2372 80		ID 120	
	8092 2651 83		GA 55+ ID 285 500V/50Hz			1624 2372 80		ID 170	
	8092 2652 17		GA 55+ ID 285 575V/60Hz			1624 2310 80		ID 245	
	8092 2650 50		GA 75+ ID 120 400V/50Hz			1624 2310 80		ID 285	
	8092 2650 68		GA 75+ ID 120 460V/60Hz				•• 1	Bracket	
	8092 2650 76		GA 75+ ID 170 200-230V/ 50Hz			1624 2375 00		ID 120	
	8092 2651 00		GA 75+ ID 170 200-230V/ 60Hz			1624 2375 00		ID 170	
	8092 2651 34		GA 75+ ID 170 380V/60Hz			1624 2312 00		ID 245	
	8092 2650 84		GA 75+ ID 170 400V/50Hz			1624 2312 00		ID 285	
	8092 2651 18		GA 75+ ID 170 460V/60Hz			0147 1325 03	•• 2	Bolt	
	8092 2650 92		GA 75+ ID 170 500V/50Hz		1080	1624 2309 80	• 1	Support assy	
	8092 2651 26		GA 75+ ID 170 575V/60Hz		1090	0129 3270 40	• 5	Rivet	
	8092 2651 42		GA 75+ ID 245 400V/50Hz		1100	0147 1247 03	• 4	Hex.bolt	
	8092 2651 59		GA 75+ ID 245 460V/60Hz		1110	0333 3220 00	• 4	Ser.washer	
	8092 2651 67		GA 75+ ID 285 200-230V/ 50Hz		1120	0300 0274 64	• 4	Washer	
	8092 2651 91		GA 75+ ID 285 200- 230V60Hz		1130	0147 1323 03	• 4	Hex.bolt	
	8092 2652 25		GA 75+ ID 285 380V/60Hz		1140	0300 0276 47	• 4	Washer	
	8092 2651 83		GA 75+ ID 285 500V/50Hz		1160	0111 1686 12	• 8	Plug	
	8092 2652 17		GA 75+ ID 285 575V/60Hz		1170	1079 2263 02	• 2	Tap screw	
	8092 2650 50		GA 90 ID 170 200-230V/ 50Hz		1500		• 2	Plate	
	8092 2650 68		GA 90 ID 170 200-230V/ 60Hz			1624 2374 00		ID 120	
	8092 2650 76		GA 90 ID 170 380V/60Hz			1624 2374 00		ID 170	
	8092 2651 00		GA 90 ID 170 400V/50Hz			1624 2314 00		ID 245	
	8092 2651 34		GA 90 ID 170 460V/60Hz			1624 2314 00		ID 285	
	8092 2650 84		GA 90 ID 170 500V/50Hz		2010	1624 2451 00	• 2	Insulation	
	8092 2651 18		GA 90 ID 170 575V/60Hz		2020	1617 0315 00	• 1	Ring (all)	
	8092 2650 92		GA 90 ID 245 400V/50Hz		2030	1617 0092 03	• 1	Ring	
	8092 2651 26		GA 90 ID 245 460V/60Hz		3010		• 1	Heat exchanger	
	8092 2651 42		GA 90 ID 285 200-230V/ 50Hz			1624 2289 80		ID 120	
	8092 2651 59		GA 90 ID 285 200- 230V60Hz			1624 2274 80		ID 170	
	8092 2651 67		GA 90 ID 285 380V/60Hz			1624 2275 80		ID 245	
	8092 2651 91		GA 90 ID 285 500V/50Hz			1624 2276 80		ID 285	
	8092 2652 25		GA 90 ID 285 575V/60Hz				•• 1	Heat exchanger	
	8092 2651 83		GA 90 ID 245 400V/50Hz			1624 2289 00		ID 120	
	8092 2652 17		GA 90 ID 245 460V/60Hz			1624 2274 00		ID 170	
	8092 2650 50		GA 90 ID 285 200-230V/ 50Hz			1624 2275 00		ID 245	
	8092 2650 68		GA 90 ID 285 200- 230V60Hz			1624 2276 00		ID 285	
	8092 2650 76		GA 90 ID 285 380V/60Hz				•• 1	Label	
	8092 2651 00		GA 90 ID 285 500V/50Hz			1624 2412 00		ID 120	
	8092 2651 34		GA 90 ID 285 575V/60Hz			1624 2411 00		ID 170	
	8092 2650 84		GA 90 ID 245 400V/50Hz			1624 2414 00		ID 245	
	8092 2651 18		GA 90 ID 245 460V/60Hz			1624 2415 00		ID 285	
	8092 2650 92		GA 90 ID 285 200-230V/ 50Hz				• 1	Pipe coupling	
	8092 2651 26		GA 90 ID 285 380V/60Hz		3020	0581 0000 71	• 1	Seal washer	
	8092 2651 42		GA 90 ID 285 500V/50Hz		3030	0661 1000 39	• 1	Label	
	8092 2651 59		GA 90 ID 285 575V/60Hz		3050		• 1	Label	
	8092 2651 67					1624 2390 04		ID 120	
	8092 2651 91					1624 2390 03		ID 170	
	8092 2652 25					1624 2390 02		ID 245	
	8092 2651 83					1624 2390 01		ID 285	
	8092 2652 17						• 1	Press.transducer	
1010		• 1	Frame assy		3060	1089 0575 54	• 1	Insulation	
	1624 2368 80		ID 120		4010		• 1	Insulation	
	1624 2368 80		ID 170			1624 2675 00		ID 120	
	1624 2306 80		ID 245			1624 2675 00		ID 170	
	1624 2306 80		ID 285			1624 2668 00		ID 245	
	1088 0803 08	•• 1	Grommet			1624 2669 00		ID 285	
	0348 0111 06	•• 1	Connector						

12

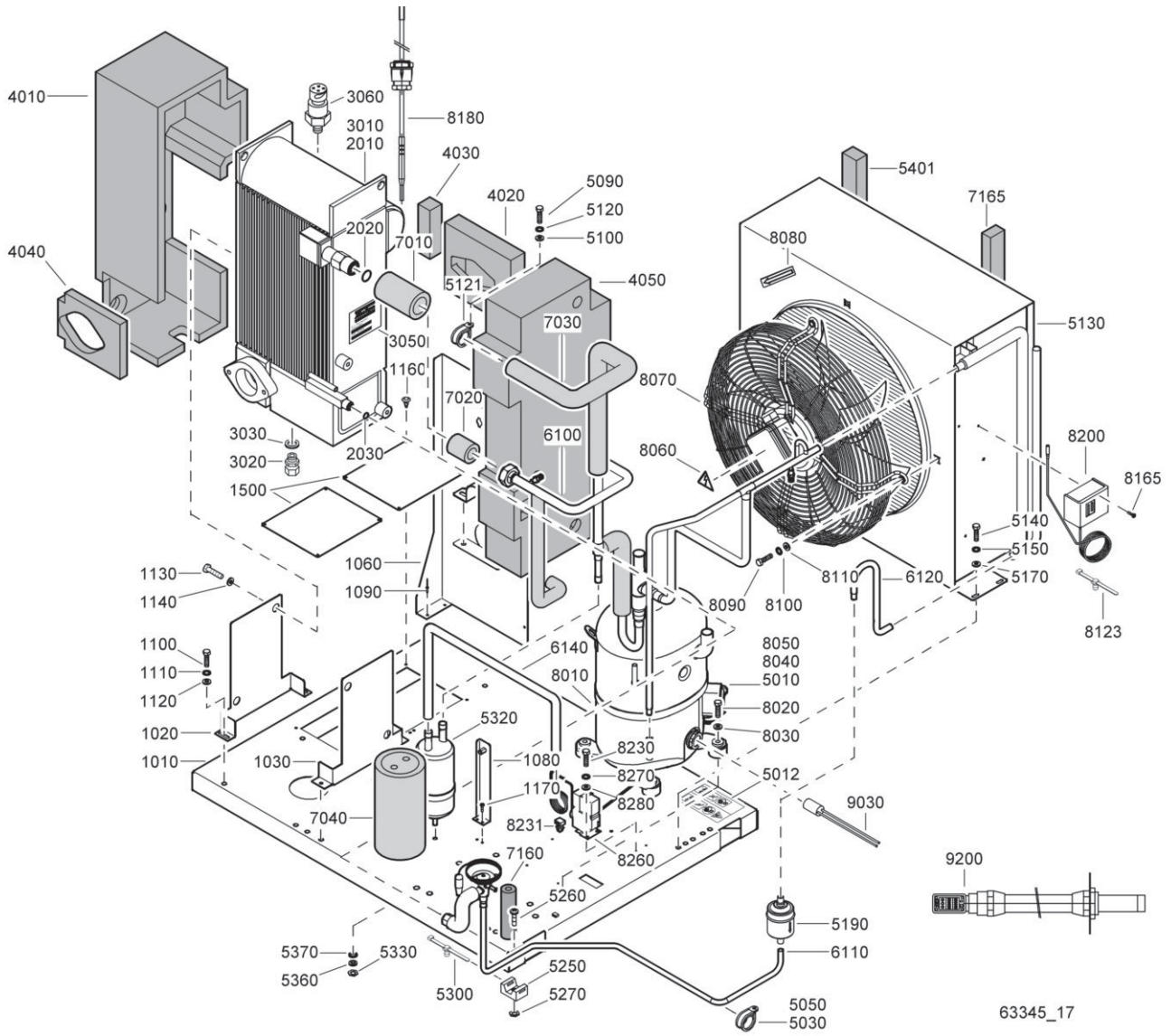


Air dryer - Full Feature

12

Ref.	Part number	Qty	Name	Remarks	Ref.	Part number	Qty	Name	Remarks
4020		• 1	Insulation			1617 0386 00		ID 170 575V CSA/UL	
	1624 2677 00		ID 120			1617 0477 00		ID 285 500V IEC	
	1624 2677 00		ID 170		7010	1624 2386 00	• 1	Insulation	
	1624 2670 00		ID 245		7020	1617 2361 00	• 1	Insulation	
	1624 2670 00		ID 285		7030		• 1	Insulation	
4030	1624 2671 00	• 1	Insulation			1617 2499 14		ID 120	
4040		• 1	Insulation			1617 2499 07		ID 170	
	1624 2679 00		ID 120			1617 2499 11		ID 245 IEC	
	1624 2676 00		ID 170			1617 2499 12		ID 245 CSA/UL	
	1624 2673 00		ID 245			1617 2499 09		ID 285	
	1624 2671 00		ID 285			1617 2499 10		ID 285 500V IEC	
4050		• 1	Insulation			1617 2499 10		ID 285 575V CSA/UL	
	1624 2680 00		ID 120		7040		• 1	Insulation assy	
	1624 2678 00		ID 170			1617 1641 80		ID 120	
	1624 2674 00		ID 245			1617 1641 80		ID 170	
	1624 2672 00		ID 285			1617 2501 80		ID 245	
5010	1617 1269 00	• AR	Freon gas			1617 2501 80		ID 285	
5012	1079 9903 48	• 1	Warning label				•• 1	Insulation plate	
5030	0346 1000 41	• 2	Pipe clamp			1617 1641 01		ID 120	
5050	1079 2263 01	• 2	Screw			1617 1641 01		ID 170	
5090	0147 1247 03	• 1	Hex.bolt			1617 2501 00		ID 245	
5100	0301 2327 00	• 1	Washer			1617 2501 00		ID 285	
5120	0333 3220 00	• 1	Ser.washer				•• 1	Insulation	
5121	0346 1000 37	• 1	Pipe clamp			1617 1642 00		ID 120	
5130		• 1	Condenser			1617 1642 00		ID 170	
	1624 2278 00		ID 120			1617 1808 03		ID 245	
	1624 2290 00		ID 170			1617 1808 03		ID 285	
	1624 2291 00		ID 245		7160		• 1	Insulation	
	1624 2292 00		ID 285			1624 2452 00		ID 120	
5140	0147 1247 03	• 6	Hex.bolt			1624 2452 00		ID 170	
5150	0333 3220 00	• 6	Ser.washer			1624 2453 00		ID 245	
5170	0300 0274 64	• 6	Washer			1624 2453 00		ID 285	
5190	1624 2293 00	• 1	Filter dryer		7165		• 1	Insulation	
5250	0348 0110 03	• 1	Anchor			1624 2455 00		ID 120	
5260	0226 3343 07	• 1	Tapping screw			1624 2455 00		ID 170	
5270	0291 1110 00	• 1	Locknut		8010		• 1	Refr. compressor	
5300	0348 0101 13	• 2	Cable tie			1624 2295 04		GA 55+ ID 120 460V/60Hz	
5320		• 1	Liquid separator			1624 2295 05		GA 55+ ID 170 200-230V/ 50Hz	
	1617 1625 00		ID 120			1624 2295 03		GA 55+ ID 170 200-230V/ 60Hz	
	1617 1625 00		ID 170			1624 2295 04		GA 55+ ID 170 380V/60Hz	
	1617 2428 00		ID 245			1624 2295 06		GA 55+ ID 170 400V/50Hz	
	1617 2428 00		ID 285			1624 2295 04		GA 55+ ID 170 460V/60Hz	
5330	0697 9809 10	• 1	Locknut			1619 7767 33		GA 55+ ID 170 500V/50Hz	
5360	0301 2335 00	• 1	Washer			1619 7767 30		GA 55+ ID 170 575V/60Hz	
5370	0333 3227 00	• 1	Ser.washer			1624 2296 02		GA 55+ ID 245 400V/50Hz	
5401	0395 6005 96	• 1	Foam			1624 2295 08		GA 55+ ID 245 460V/60Hz	
6100		• 1	Pipe assy			1624 2296 03		GA 55+ ID 285 200- 230V60Hz	
	1619 5563 02	•• 3	Schräder valve			1624 2296 02		GA 55+ ID 285 380V/60Hz	
	1617 2750 00	•• 1	Non return valve			1614 7168 20		GA 55+ ID 285 500V/50Hz	
	1617 0314 00	•• 1	Nut			1614 7168 19		GA 55+ ID 285 575V/60Hz	
	1617 0107 00	•• 1	Sleeve			1624 2295 02		GA 75+ ID 120 400V/50Hz	
	1617 1524 04	•• 1	HGB Valve			1624 2295 04		GA 75+ ID 120 460V/60Hz	
6110		• 1	Pipe assy			1624 2295 05		GA 75+ ID 170 200-230V/ 50Hz	
		•• 1	Temperature Expantion Valve			1624 2295 03		GA 75+ ID 170 200-230V/ 60Hz	
	1624 2297 07		ID 120			1624 2295 04		GA 75+ ID 170 380V/60Hz	
	1624 2297 08		ID 170			1624 2295 06		GA 75+ ID 170 400V/50Hz	
	1624 2297 09		ID 245			1624 2295 04		GA 75+ ID 170 460V/60Hz	
	1624 2297 09		ID 285			1619 7767 33		GA 75+ ID 170 500V/50Hz	
6120	1624 2383 00	• 1	Pipe			1619 7767 30		GA 75+ ID 170 575V/60Hz	
6140		• 1	Pipe assy						
		•• 1	Nut						
	1617 0314 00		ID 170 575V CSA/UL						
	1617 0476 00		ID 285 500V IEC						
		•• 1	Sleeve						

12

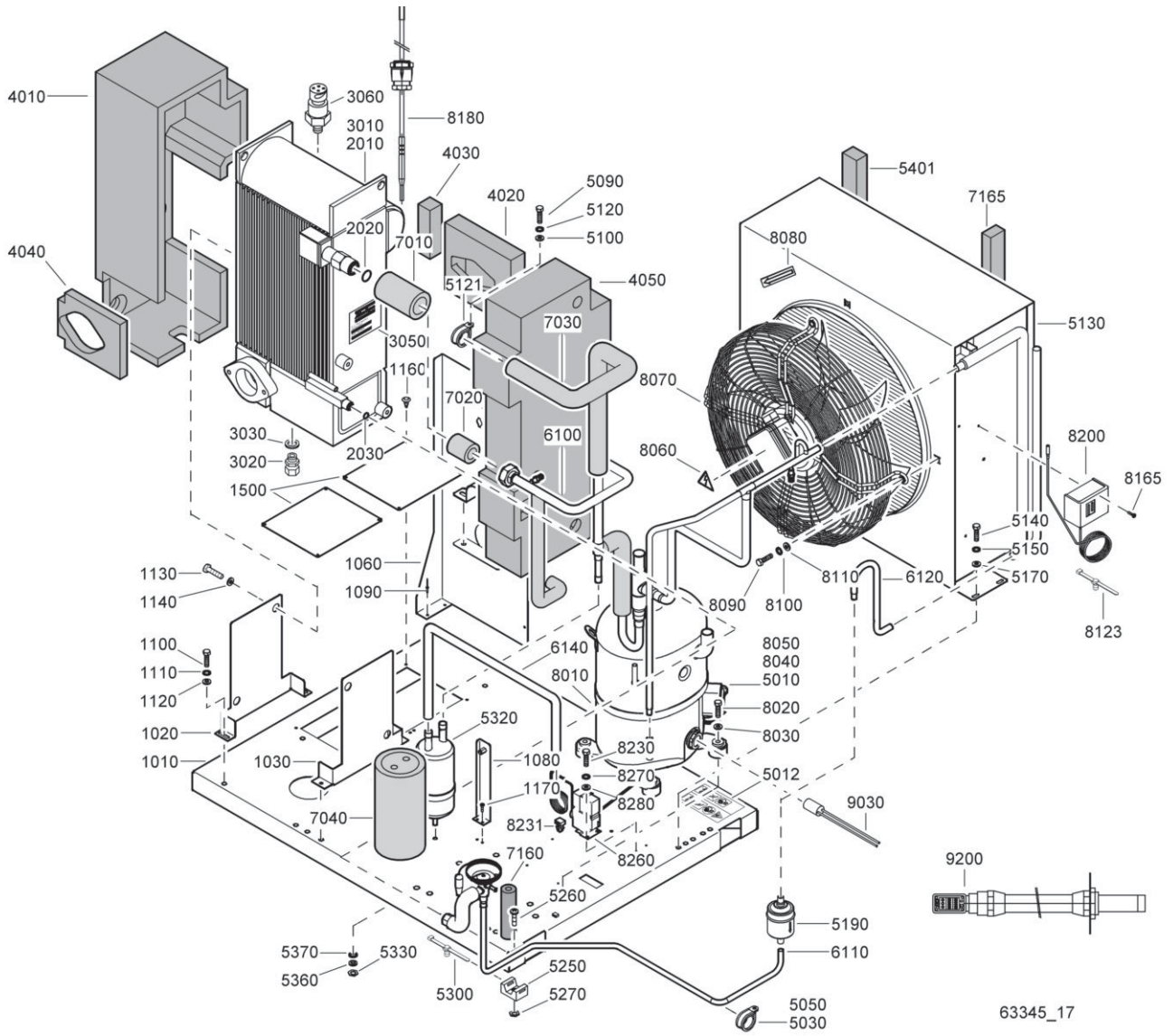


Air dryer - Full Feature

12

Ref.	Part number	Qty	Name	Remarks	Ref.	Part number	Qty	Name	Remarks
	1624 2296 02		GA 75+ ID 245 400V/50Hz			1619 5337 03	3	GA 75+ ID 285 575V/60Hz	
	1624 2295 08		GA 75+ ID 245 460V/60Hz			0147 1331 03	4	GA 90 ID 170 200-230V/ 50Hz	
	1624 2296 03		GA 75+ ID 285 200-230V/ 50Hz			0147 1331 03	4	GA 90 ID 170 200-230V/ 60Hz	
	1624 2296 03		GA 75+ ID 285 200-230V/60Hz			0147 1331 03	4	GA 90 ID 170 380V/60Hz	
	1624 2296 02		GA 75+ ID 285 380V/60Hz			0147 1331 03	4	GA 90 ID 170 400V/50Hz	
	1614 7168 20		GA 75+ ID 285 500V/50Hz			0147 1331 03	4	GA 90 ID 170 460V/60Hz	
	1614 7168 19		GA 75+ ID 285 575V/60Hz			0147 1331 03	4	GA 90 ID 170 500V/50Hz	
	1624 2295 05		GA 90 ID 170 200-230V/ 50Hz			1619 5337 03	3	GA 90 ID 170 575V/60Hz	
	1624 2295 03		GA 90 ID 170 200-230V/ 60Hz			0147 1331 03	4	GA 90 ID 245 400V/50Hz	
	1624 2295 04		GA 90 ID 170 380V/60Hz			0147 1331 03	4	GA 90 ID 245 460V/60Hz	
	1624 2295 06		GA 90 ID 170 400V/50Hz			0147 1331 03	4	GA 90 ID 285 200-230V/ 60Hz	
	1624 2295 04		GA 90 ID 170 460V/60Hz			0147 1331 03	4	GA 90 ID 285 380V/60Hz	
	1619 7767 33		GA 90 ID 170 500V/50Hz			0147 1331 03	4	GA 90 ID 285 400V/50Hz	
	1619 7767 30		GA 90 ID 170 575V/60Hz			0147 1331 03	4	GA 90 ID 285 460V/60Hz	
	1624 2296 02		GA 90 ID 245 400V/50Hz			1619 5337 03	3	GA 90 ID 285 500V/50Hz	
	1624 2295 08		GA 90 ID 245 460V/60Hz			1619 5337 03	3	GA 90 ID 285 575V/60Hz	
	1624 2296 03		GA 90 ID 285 200-230V/ 50Hz		8030	0300 8019 00	• 4	Washer	
	1624 2296 03		GA 90 ID 285 200-230V/60Hz		8040	0333 3214 00	• 1	Ser.washer	
	1624 2296 02		GA 90 ID 285 380V/60Hz		8050	0301 2315 00	• 1	Washer	
	1624 2296 04		GA 90 ID 285 400V/50Hz		8060	1088 1001 01	• 3	Warning mark	
	1624 2296 02		GA 90 ID 285 460V/60Hz		8070		• 1	Fan assy	
	1614 7168 20		GA 90 ID 285 500V/50Hz			1624 2390 80		ID 120 400V/50Hz	
	1614 7168 19		GA 90 ID 285 575V/60Hz			1617 2581 80		ID 120 460V/60Hz	
8020		•	Hexagon bolt			1617 2057 80		ID 170 200-230V/50Hz	
	0147 1331 03	4	GA 55+ ID 120 460V/60Hz			1617 2581 80		ID 170 200-230V/60Hz	
	0147 1331 03	4	GA 55+ ID 170 200-230V/ 50Hz			1617 2057 80		ID 170 380V/60Hz	
	0147 1331 03	4	GA 55+ ID 170 200-230V/ 60Hz			1617 2057 80		ID 170 400V/50Hz	
	0147 1331 03	4	GA 55+ ID 170 380V/60Hz			1617 2581 80		ID 170 460V/60Hz	
	0147 1331 03	4	GA 55+ ID 170 400V/50Hz			1617 2582 80		ID 170 500V/50Hz	
	0147 1331 03	4	GA 55+ ID 170 460V/60Hz			1617 2582 80		ID 170 575V/60Hz	
	0147 1331 03	4	GA 55+ ID 170 500V/50Hz			1617 2057 80		ID 245 400V/50Hz	
	1619 5337 03	3	GA 55+ ID 170 575V/60Hz			1617 2581 80		ID 245 460V/60Hz	
	0147 1331 03	4	GA 55+ ID 245 400V/50Hz			1617 2057 80		ID 285 200-230V/50Hz	
	0147 1331 03	4	GA 55+ ID 245 460V/60Hz			1617 2057 80		ID 285 200-230V/60Hz	
	0147 1331 03	4	GA 55+ ID 285 200-230V/60Hz			1617 2057 80		ID 285 380V/60Hz	
	0147 1331 03	4	GA 55+ ID 285 380V/60Hz			1617 2057 80		ID 285 400V/50Hz	
	1619 5337 03	3	GA 55+ ID 285 500V/50Hz			1617 2057 80		ID 285 460V/60Hz	
	0147 1331 03	4	GA 75+ ID 120 400V/50Hz			1617 2057 80		ID 285 500V/50Hz	
	0147 1331 03	4	GA 75+ ID 120 460V/60Hz			1617 2582 80		ID 285 575V/60Hz	
	0147 1331 03	4	GA 75+ ID 170 200-230V/ 50Hz			1617 2582 80		Fan	
	0147 1331 03	4	GA 75+ ID 170 200-230V/ 60Hz			1617 2581 00	•• 1	ID 120 460V/60Hz	
	0147 1331 03	4	GA 75+ ID 170 380V/60Hz			1617 2057 00		ID 170 200-230V/50Hz	
	0147 1331 03	4	GA 75+ ID 170 400V/50Hz			1617 2581 00		ID 170 200-230V/60Hz	
	0147 1331 03	4	GA 75+ ID 170 460V/60Hz			1617 2057 00		ID 170 380V/60Hz	
	0147 1331 03	4	GA 75+ ID 170 500V/50Hz			1617 2057 00		ID 170 400V/50Hz	
	1619 5337 03	3	GA 75+ ID 170 575V/60Hz			1617 2581 00		ID 170 460V/60Hz	
	0147 1331 03	4	GA 75+ ID 245 400V/50Hz			1617 2582 00		ID 170 500V/50Hz	
	0147 1331 03	4	GA 75+ ID 245 460V/60Hz			1617 2582 00		ID 170 575V/60Hz	
	0147 1331 03	4	GA 75+ ID 285 200-230V/ 50Hz			1617 2057 00		ID 245 400V/50Hz	
	0147 1331 03	4	GA 75+ ID 285 200-230V/60Hz			1617 2581 00		ID 245 460V/60Hz	
	0147 1331 03	4	GA 75+ ID 170 380V/60Hz			1617 2057 00		ID 285 200-230V/50Hz	
	0147 1331 03	4	GA 75+ ID 170 400V/50Hz			1617 2057 00		ID 285 200-230V/60Hz	
	0147 1331 03	4	GA 75+ ID 170 460V/60Hz			1617 2057 00		ID 285 380V/60Hz	
	0147 1331 03	4	GA 75+ ID 170 500V/50Hz			1617 2057 00		ID 285 400V/50Hz	
	1619 5337 03	3	GA 75+ ID 170 575V/60Hz			1617 2057 00		ID 285 460V/60Hz	
	0147 1331 03	4	GA 75+ ID 245 400V/50Hz			1617 2057 00		ID 285 500V/50Hz	
	0147 1331 03	4	GA 75+ ID 245 460V/60Hz			1617 2057 00		ID 285 575V/60Hz	
	0147 1331 03	4	GA 75+ ID 285 200-230V/ 50Hz			1617 2582 00		ID 285 575V/60Hz	
	0147 1331 03	4	GA 75+ ID 285 200-230V/60Hz			1617 2059 00	•• 1	Fan grating	
	0147 1331 03	4	GA 75+ ID 285 380V/60Hz		8080	1503 0786 00	• 1	Rotation arrow	
	0147 1331 03	4	GA 75+ ID 285 500V/50Hz		8090	0147 1326 03	• 4	Hex.bolt	
	1619 5337 03	3	GA 75+ ID 285 500V/50Hz		8100	0333 3227 00	• 4	Ser.washer	

12



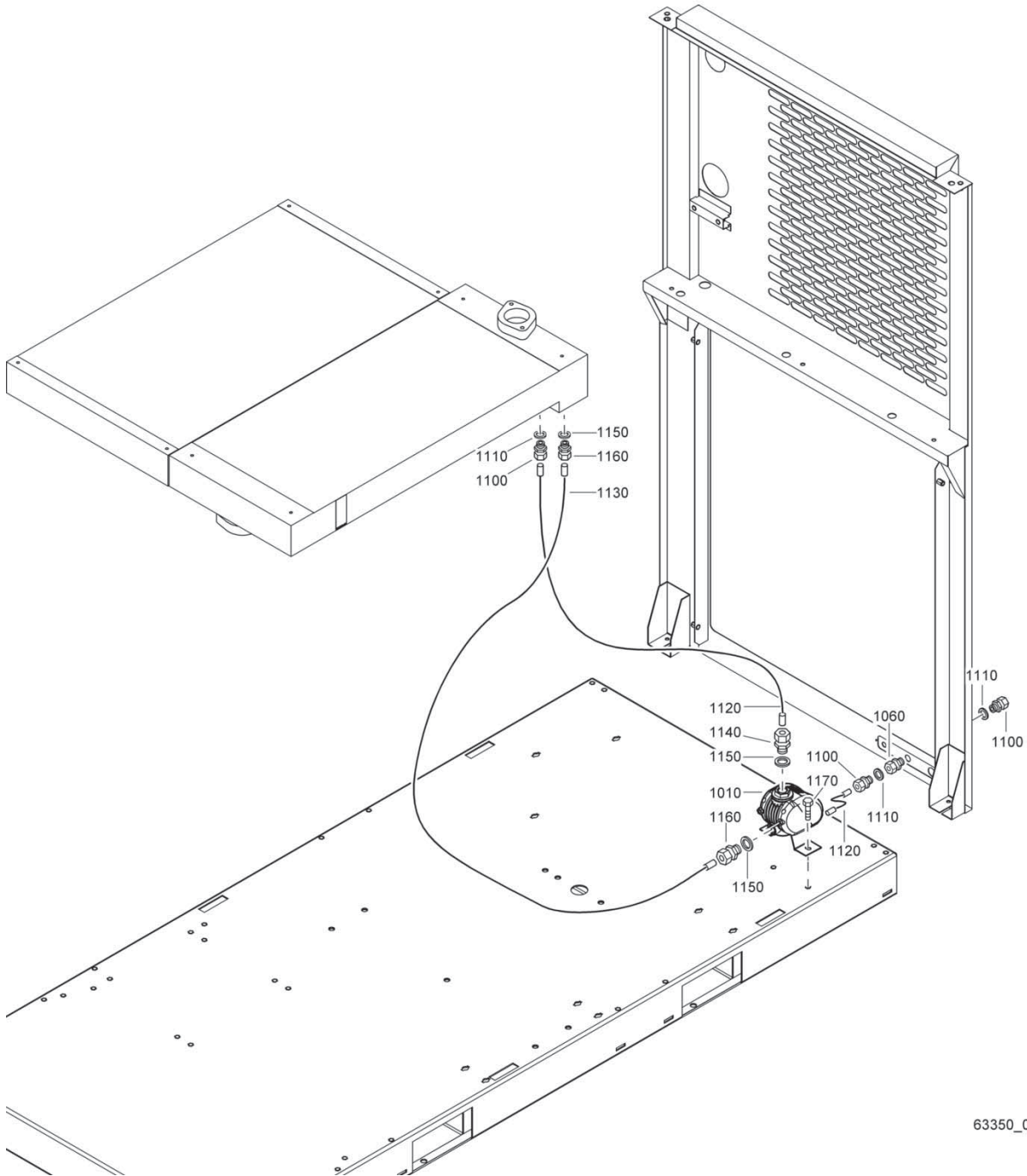
Air dryer - Full Feature

12

Ref.	Part number	Qty	Name	Remarks	Ref.	Part number	Qty	Name	Remarks
8110	0300 8019 00	• 4	Washer		1624	2388 80		GA 75+ ID 285 200-230V/ 50Hz	
8123	0348 0101 13	• 10	Cable tie		1624	2388 80		GA 75+ ID 285 200- 230V60Hz	
8165	0226 3256 00	• 2	Screw		1624	2362 80		GA 75+ ID 285 380V/60Hz	
8180	1617 3077 85	• 1	Temp.sensor		1624	2362 80		GA 75+ ID 285 500V/50Hz	
8200	1089 9139 04	• 1	Fan switch		1624	2362 80		GA 75+ ID 285 575V/60Hz	
8230	0226 3343 07	• 2	Tapping screw		1624	2360 80		GA 90 ID 170 200-230V/ 50Hz	
8231	0348 0111 06	• 1	Connector		1624	2362 80		GA 90 ID 170 200-230V/ 60Hz	
8260	1619 5703 00	• 1	High pressure switch		1624	2362 80		GA 90 ID 170 380V/60Hz	
8270	0333 3214 00	• 2	Ser.washer		1624	2360 80		GA 90 ID 170 400V/50Hz	
8280	0301 2315 00	• 2	Washer		1624	2362 80		GA 90 ID 170 460V/60Hz	
9030		• 1	Crankcase heater		1624	2362 80		GA 90 ID 170 500V/50Hz	
	1624 2313 80		200-230V/50Hz		1624	2362 80		GA 90 ID 170 575V/60Hz	
	1624 2313 80		200-230V/60Hz		1624	2360 80		GA 90 ID 245 400V/50Hz	
	1624 2313 80		380V/60Hz		1624	2362 80		GA 90 ID 245 460V/60Hz	
	1624 2313 80		400V/50Hz		1624	2360 80		GA 90 ID 285 200-230V/ 50Hz	
	1624 2313 80		460V/60Hz		1624	2362 80		GA 90 ID 285 200- 230V60Hz	
	1624 2365 80		500V/50Hz		1624	2362 80		GA 90 ID 285 380V/60Hz	
	1624 2365 80		575V/60Hz		1624	2360 80		GA 90 ID 285 400V/50Hz	
	1088 0015 02	•• 1	Connector plug		1624	2362 80		GA 90 ID 285 460V/60Hz	
		•• 1	Clamp		1624	2388 80		GA 90 ID 285 500V/50Hz	
	1624 2389 00		200-230V/50Hz		1624	2362 80		GA 90 ID 285 500V/50Hz	
	1624 2389 00		200-230V/60Hz		1624	2362 80		GA 90 ID 285 575V/60Hz	
	1624 2389 00		380V/60Hz		1624	2360 80		GA 90 ID 285 575V/60Hz	
	1624 2389 00		400V/50Hz		1624	2362 80		GA 90 ID 285 575V/60Hz	
	1624 2389 00		460V/60Hz		1624	2362 80		GA 90 ID 285 575V/60Hz	
		•• 1	Crankcase heater		1624	2362 80		GA 90 ID 285 575V/60Hz	
	1624 2313 00		200-230V/50Hz		1624	2362 80		GA 90 ID 285 575V/60Hz	
	1624 2313 00		200-230V/60Hz		1624	2362 80		GA 90 ID 285 575V/60Hz	
	1624 2313 00		380V/60Hz		1624	2361 00	•• 1	Plate	
	1624 2313 00		400V/50Hz		1624	2361 00		200-230V/50Hz	
	1624 2313 00		460V/60Hz		1624	2361 00		200-230V/60Hz	
	1624 2365 00		500V/50Hz		1624	2361 00		380V/60Hz	
	1624 2365 00		575V/60Hz		1624	2361 00		460V/60Hz	
	1088 0015 14	•• 2	Pin contact		1624	2361 00		500V/50Hz	
9200		• 1	Wiring		1624	2361 00		575V/60Hz	
	1624 2362 80		GA 55+ ID 120 460V/60Hz						
	1624 2360 80		GA 55+ ID 170 200-230V/ 50Hz						
	1624 2362 80		GA 55+ ID 170 200-230V/ 60Hz						
	1624 2362 80		GA 55+ ID 170 380V/60Hz						
	1624 2360 80		GA 55+ ID 170 400V/50Hz						
	1624 2362 80		GA 55+ ID 170 460V/60Hz						
	1624 2360 80		GA 55+ ID 170 500V/50Hz						
	1624 2362 80		GA 55+ ID 170 575V/60Hz						
	1624 2360 80		GA 55+ ID 245 400V/50Hz						
	1624 2362 80		GA 55+ ID 245 460V/60Hz						
	1624 2388 80		GA 55+ ID 285 200- 230V60Hz						
	1624 2362 80		GA 55+ ID 285 380V/60Hz						
	1624 2362 80		GA 55+ ID 285 500V/50Hz						
	1624 2362 80		GA 55+ ID 285 575V/60Hz						
	1624 2360 80		GA 75+ ID 120 400V/50Hz						
	1624 2362 80		GA 75+ ID 120 460V/60Hz						
	1624 2360 80		GA 75+ ID 170 200-230V/ 50Hz						
	1624 2362 80		GA 75+ ID 170 200-230V/ 60Hz						
	1624 2362 80		GA 75+ ID 170 380V/60Hz						
	1624 2360 80		GA 75+ ID 170 400V/50Hz						
	1624 2362 80		GA 75+ ID 170 460V/60Hz						
	1624 2360 80		GA 75+ ID 170 500V/50Hz						
	1624 2362 80		GA 75+ ID 170 575V/60Hz						
	1624 2360 80		GA 75+ ID 245 400V/50Hz						
	1624 2362 80		GA 75+ ID 245 460V/60Hz						

13

Drain System - Pack - GA (A)

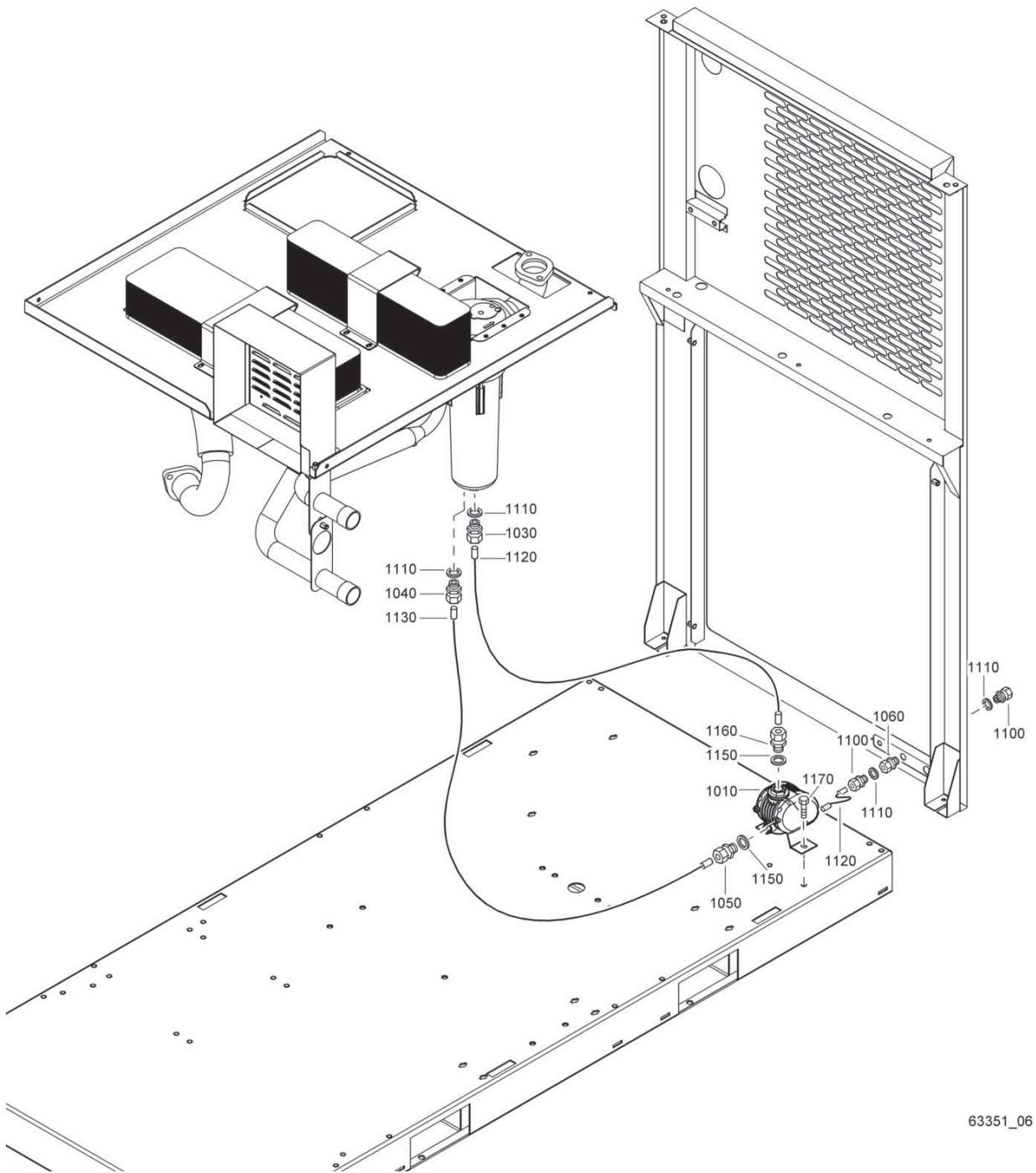


63350_06

63350_06

Ref.	Part number	Qty	Name	Remarks	Ref.	Part number	Qty	Name	Remarks
1010	1622 3798 81	1	Drain assembly		1130	0070 6002 13	AR	Plastic tube	
1060	0581 0000 87	1	Pipe coupling		1140	0581 0000 73	1	Straight coupling	
1100	0581 0000 35	3	Coupling		1150	0661 1000 39	3	Seal washer	
1110	0661 1000 38	3	Seal washer		1160	0581 0000 71	2	Straight coupling	
1120	0070 6002 03	AR	Plastic tube		1170	0147 1963 08	2	Hexagon bolt	

Drain System - Pack - GA (W)



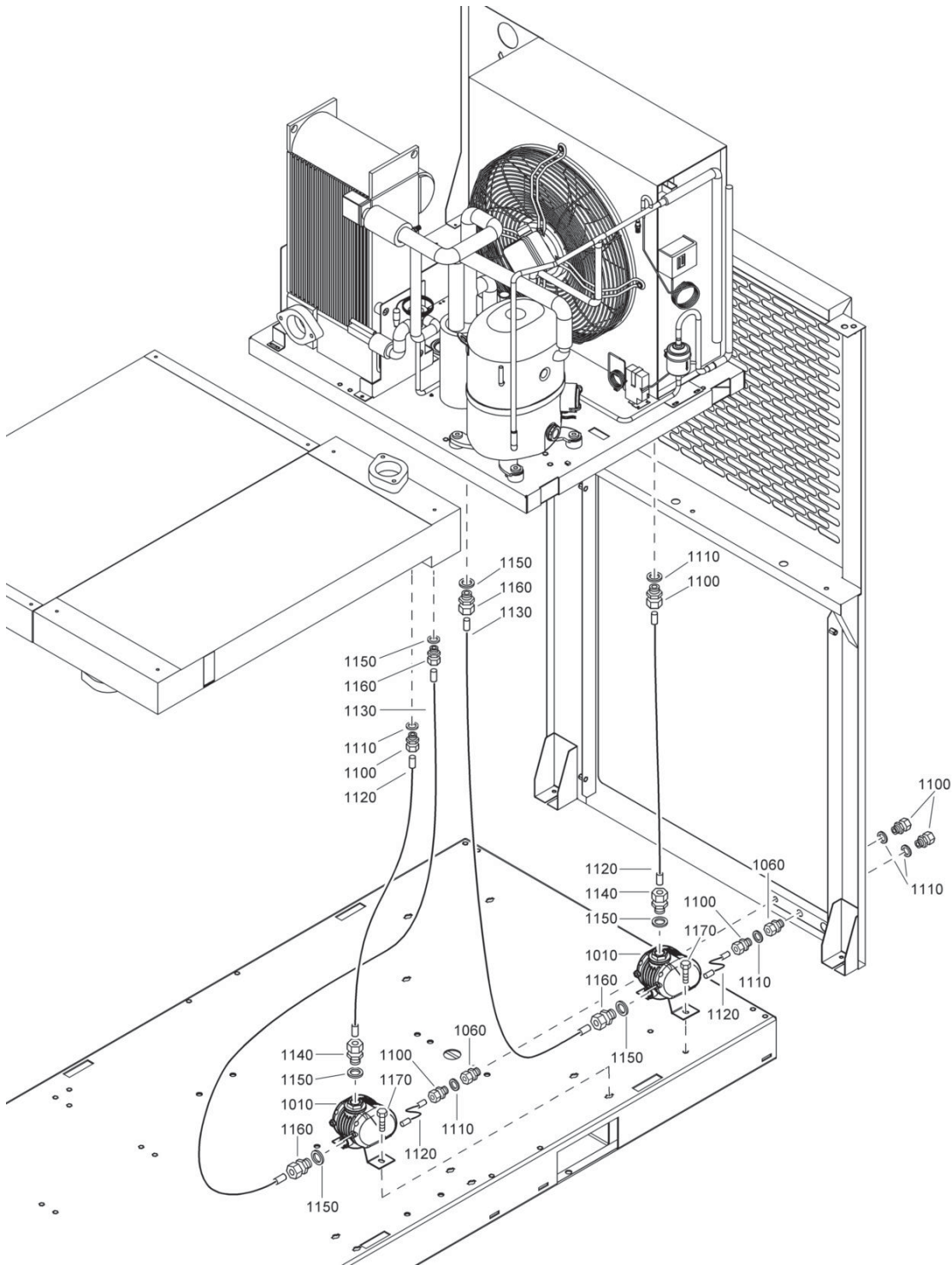
63351_06

63351_06

Ref.	Part number	Qty	Name	Remarks	Ref.	Part number	Qty	Name	Remarks
1010	1622 3798 81	1	Drain assembly		1110	0661 1000 38	4	Seal washer	
1030	1613 8084 00	1	Coupling		1120	0070 6002 03	AR	Plastic tube	
1040	0581 0001 45	1	Coupling		1130	0070 6002 13	AR	Plastic tube	
1050	0581 0000 53	1	Coupling		1150	0661 1000 39	2	Seal washer	
1060	0581 0000 87	1	Pipe coupling		1160	0581 0000 73	1	Straight coupling	
1100	0581 0000 35	2	Coupling		1170	0147 1963 08	2	Hexagon bolt	

15

Drain System - Full Feature - GA (A)



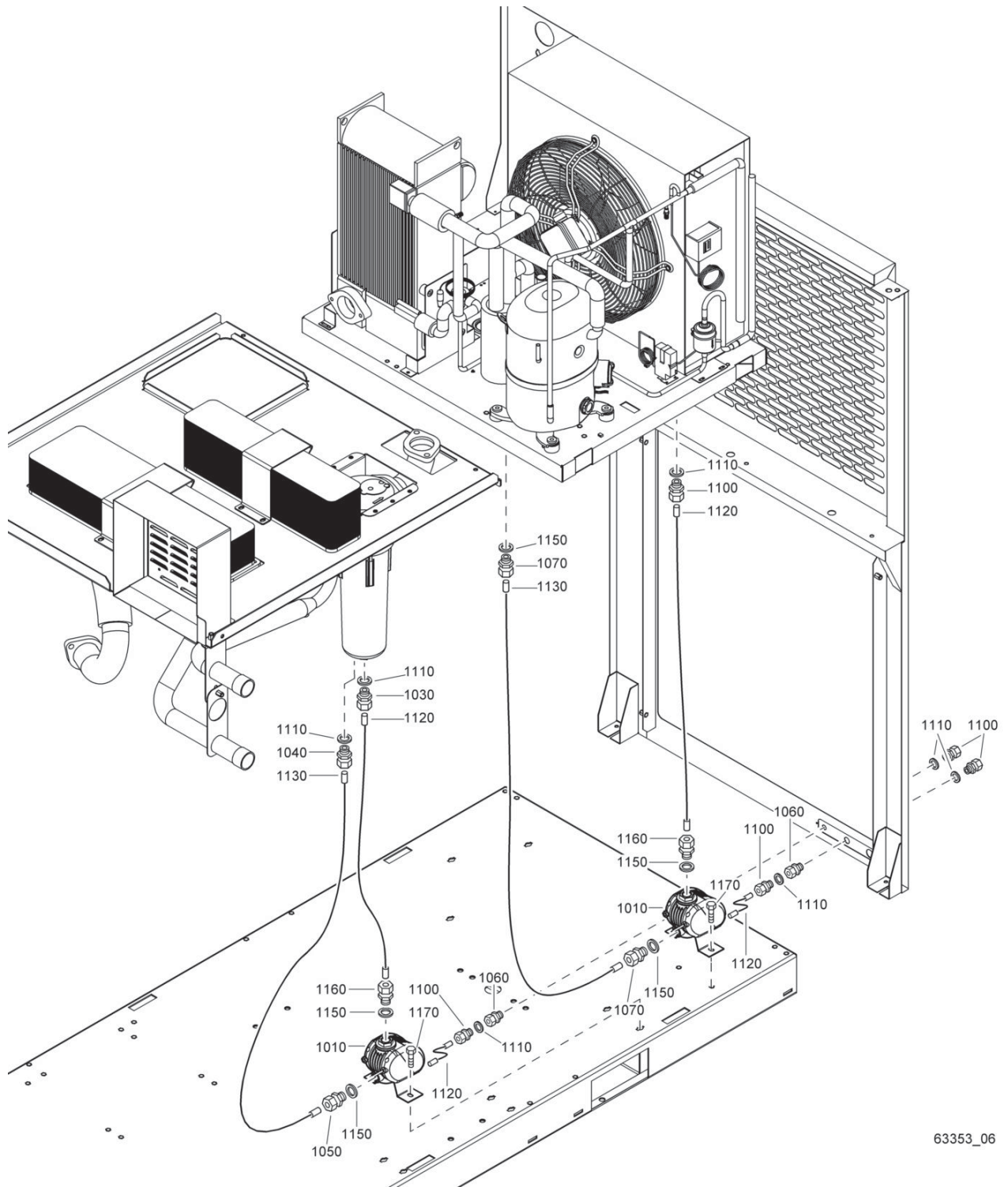
63352_06

63352_06

Ref.	Part number	Qty	Name	Remarks	Ref.	Part number	Qty	Name	Remarks
1010	1622 3798 81	2	Drain assembly		1130	0070 6002 13	AR	Plastic tube	
1060	0581 0000 87	2	Pipe coupling		1140	0581 0000 73	2	Straight coupling	
1100	0581 0000 35	6	Coupling		1150	0661 1000 39	6	Seal washer	
1110	0661 1000 38	6	Seal washer		1160	0581 0000 71	4	Straight coupling	
1120	0070 6002 03	AR	Plastic tube		1170	0147 1963 08	4	Hexagon bolt	

Drain System - Full Feature - GA (W)

16

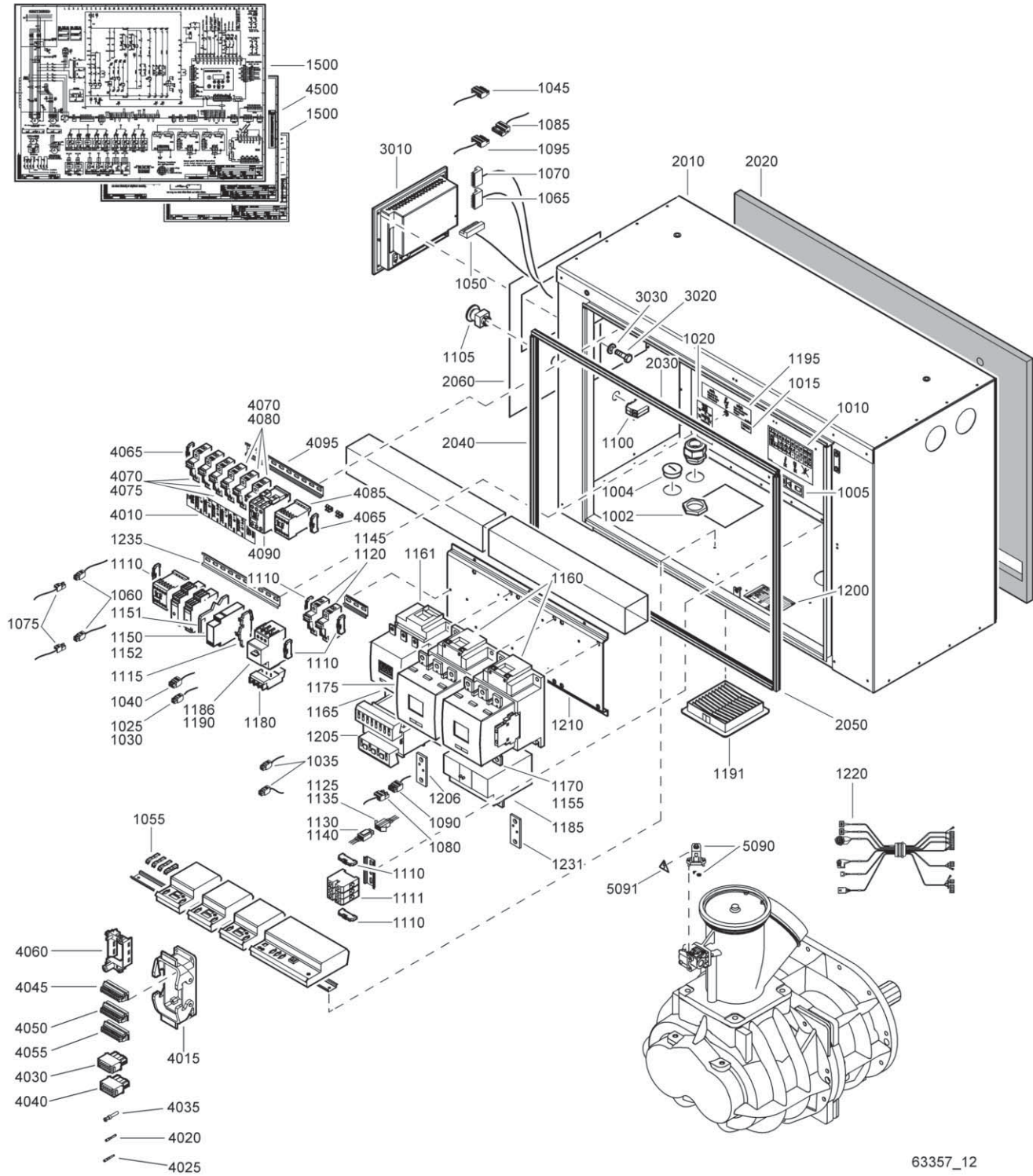


63353_06

63353_06

Ref.	Part number	Qty	Name	Remarks	Ref.	Part number	Qty	Name	Remarks
1010	1622 3798 81	2	Drain assembly		1100	0581 0000 35	5	Coupling	
1030	1613 8084 00	1	Coupling		1110	0661 1000 38	7	Seal washer	
1040	0581 0001 45	1	Coupling		1120	0070 6002 03	AR	Plastic tube	
1050	0581 0000 53	1	Coupling		1130	0070 6002 13	AR	Plastic tube	
1060	0581 0000 87	2	Pipe coupling		1150	0661 1000 39	5	Seal washer	
1070	0581 0000 71	2	Pipe coupling		1160	0581 0000 73	2	Straight coupling	
					1170	0147 1963 08	4	Hexagon bolt	

17

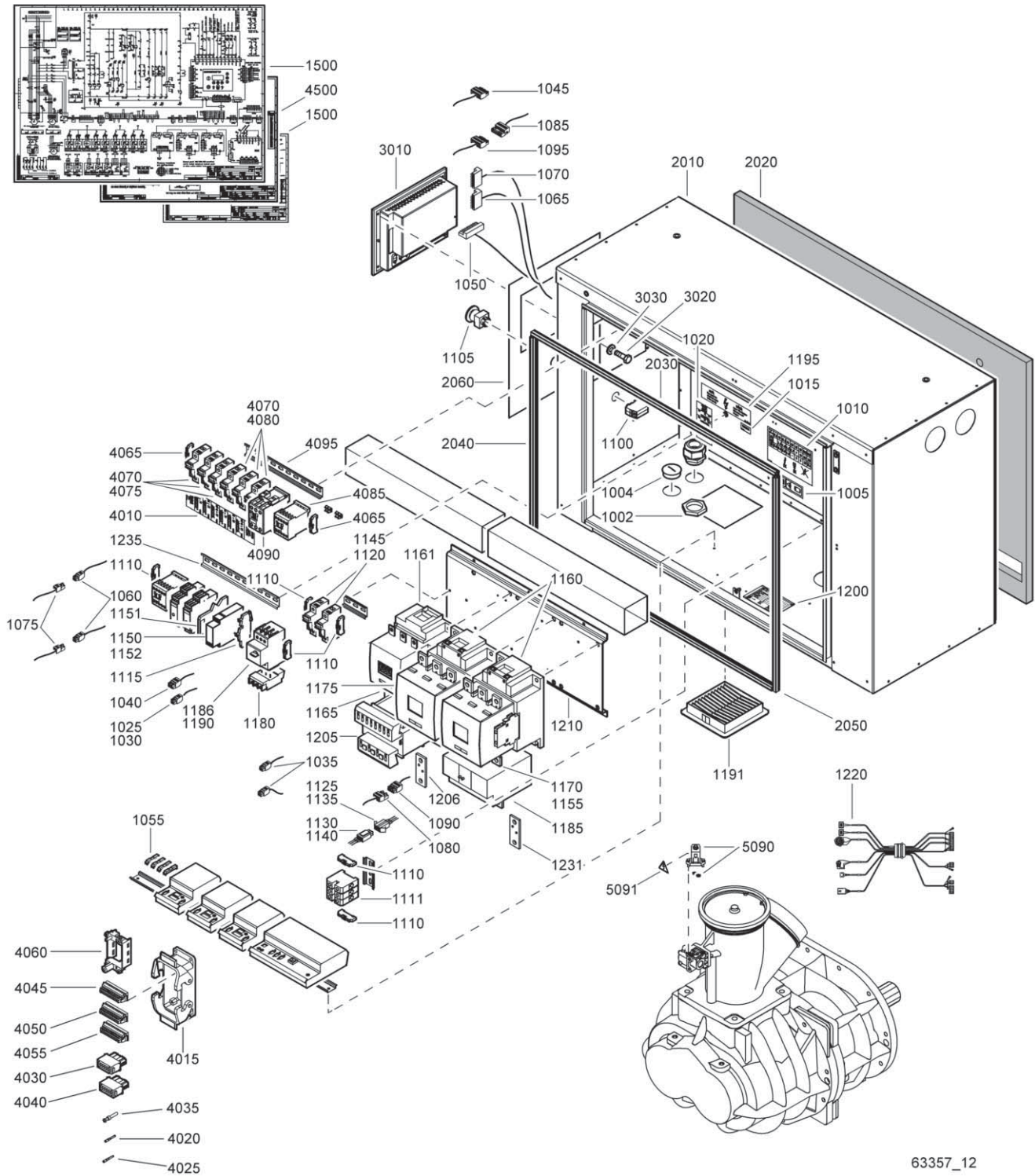


63357_12

Cubicle - CSA/UL

Ref.	Part number	Qty	Name	Remarks	Ref.	Part number	Qty	Name	Remarks
		1	Cubicle						
	1900 2514 55		GA 55+ 200V/60Hz			1089 0506 04		GA 90 460V/60Hz	
	1900 2514 55		GA 55+ 230V/60Hz			1089 0506 04		GA 90 575V/60Hz	
	1900 2514 52		GA 55+ 460V/60Hz		1115	1089 0506 75	• 1	Terminal	
	1900 2514 51		GA 55+ 575V/60Hz		1120	1089 0612 01	• 2	Fuse holder	
	1900 2514 56		GA 75+ 200V/60Hz		1125	1089 0700 01	• 1	Connector	
	1900 2514 55		GA 75+ 230V/60Hz		1130	1089 0700 02	• 1	Connector	
	1900 2514 53		GA 75+ 460V/60Hz		1135	1089 0700 03	• 8	Connector pin	
	1900 2514 52		GA 75+ 575V/60Hz		1140	1089 0700 04	• 8	Connector socket	
	1900 2514 56		GA 90 200V/60Hz		1145		• 2	Fuse link	
	1900 2514 56		GA 90 230V/60Hz			1089 9168 34		GA 55+ 200V/60Hz	
	1900 2514 54		GA 90 460V/60Hz			1089 9168 34		GA 55+ 230V/60Hz	
	1900 2514 53		GA 90 575V/60Hz			1089 9168 26		GA 55+ 460V/60Hz	
1002	0697 9809 06	• 1	Lock nut			1089 9168 26		GA 55+ 575V/60Hz	
1004	0697 9810 22	• 1	Plug			1089 9168 34		GA 75+ 200V/60Hz	
1005	1079 9901 68	• 1	Warning label			1089 9168 34		GA 75+ 230V/60Hz	
1010	1079 9906 09	• 1	Label			1089 9168 26		GA 75+ 460V/60Hz	
1015	1079 9911 01	• 1	Label			1089 9168 26		GA 75+ 575V/60Hz	
1020		•	Label			1089 9168 34		GA 90 200V/60Hz	
	1079 9925 28	2	GA 55+ 200V/60Hz			1089 9168 34		GA 90 230V/60Hz	
	1079 9925 28	2	GA 55+ 230V/60Hz			1089 9168 26		GA 90 460V/60Hz	
	1079 9924 26	1	GA 55+ 460V/60Hz		1150	1089 9511 51	• 1	Relay	
	1079 9924 26	1	GA 55+ 575V/60Hz		1151	1089 9511 15	• 1	Socket	
	1079 9925 28	2	GA 75+ 200V/60Hz		1152	1089 9511 16	• 1	Clip	
	1079 9925 28	2	GA 75+ 230V/60Hz		1155		• 1	Supply terminal	
	1079 9924 26	1	GA 75+ 460V/60Hz			1089 9416 93		GA 55+ 575V/60Hz	
	1079 9924 26	1	GA 75+ 575V/60Hz		1160		• 2	Contact	
	1079 9925 28	2	GA 90 200V/60Hz			1089 9415 81		GA 55+ 200V/60Hz	
	1079 9925 28	2	GA 90 230V/60Hz			1089 9415 81		GA 55+ 230V/60Hz	
	1079 9924 26	1	GA 90 460V/60Hz			1089 9415 45		GA 55+ 460V/60Hz	
	1079 9924 26	1	GA 90 575V/60Hz			1089 9415 36		GA 55+ 575V/60Hz	
1025	1088 0015 02	• 1	Connector plug			1089 9415 83		GA 75+ 200V/60Hz	
1030	1088 0015 36	• 2	Connector socket			1089 9415 81		GA 75+ 230V/60Hz	
1035	1088 0031 02	• 2	Connector			1089 9415 46		GA 75+ 460V/60Hz	
1040	1088 0031 03	• 1	Connector			1089 9415 45		GA 75+ 575V/60Hz	
1045	1088 0031 05	• 1	Connector			1089 9415 83		GA 90 200V/60Hz	
1050	1088 0031 13	• 1	Connector			1089 9415 83		GA 90 230V/60Hz	
1055	1088 0031 18	• 4	Adaptor for connector			1089 9415 61		GA 90 460V/60Hz	
1060	1088 0031 22	• 2	Connector			1089 9415 46		GA 90 575V/60Hz	
1065	1088 0031 29	• 1	Connector		1161		• 1	Contact	
1070	1088 0031 49	• 1	Connector			1089 9415 61		GA 55+ 200V/60Hz	
1075	1088 0031 82	• 2	Connector			1089 9415 61		GA 55+ 230V/60Hz	
1080	1088 0031 84	• 1	Connector			1089 9415 35		GA 55+ 460V/60Hz	
1085	1088 0031 86	• 1	Connector			1089 9415 34		GA 55+ 575V/60Hz	
1090	1088 0037 04	• 1	Connector			1089 9415 62		GA 75+ 200V/60Hz	
1095	1088 0037 06	• 1	Connector			1089 9415 61		GA 75+ 230V/60Hz	
1100	1089 0362 50	• 2	Contact block			1089 9415 44		GA 75+ 460V/60Hz	
1105	1089 0362 51	• 1	Push button			1089 9415 35		GA 75+ 575V/60Hz	
1110		•	End bracket			1089 9415 62		GA 90 200V/60Hz	
	1089 0506 30	4	GA 55+ 200V/60Hz			1089 9415 62		GA 90 230V/60Hz	
	1089 0506 30	4	GA 55+ 230V/60Hz			1089 9415 44		GA 90 460V/60Hz	
	1089 0506 30	6	GA 55+ 460V/60Hz			1089 9415 44		GA 90 575V/60Hz	
	1089 0506 30	4	GA 55+ 575V/60Hz		1165		• 1	Contact block	
	1089 0506 30	4	GA 75+ 200V/60Hz			1089 9415 09		GA 55+ 460V/60Hz	
	1089 0506 30	4	GA 75+ 230V/60Hz			1089 9415 09		GA 55+ 575V/60Hz	
	1089 0506 30	6	GA 75+ 460V/60Hz			1089 9415 09		GA 75+ 460V/60Hz	
	1089 0506 30	6	GA 75+ 575V/60Hz			1089 9415 09		GA 75+ 575V/60Hz	
	1089 0506 30	4	GA 90 200V/60Hz			1089 9415 09		GA 90 460V/60Hz	
	1089 0506 30	4	GA 90 230V/60Hz			1089 9415 09		GA 90 575V/60Hz	
	1089 0506 30	6	GA 90 460V/60Hz		1170		• 1	Contact block	
	1089 0506 30	6	GA 90 575V/60Hz			1089 9415 55		GA 55+ 460V/60Hz	
1111		• 1	Terminal			1089 9415 55		GA 55+ 575V/60Hz	
	1089 0506 04		GA 55+ 460V/60Hz			1089 9415 55		GA 75+ 460V/60Hz	
	1089 0506 04		GA 75+ 460V/60Hz			1089 9415 55		GA 75+ 575V/60Hz	
	1089 0506 04		GA 75+ 575V/60Hz			1089 9415 55		GA 90 575V/60Hz	

17



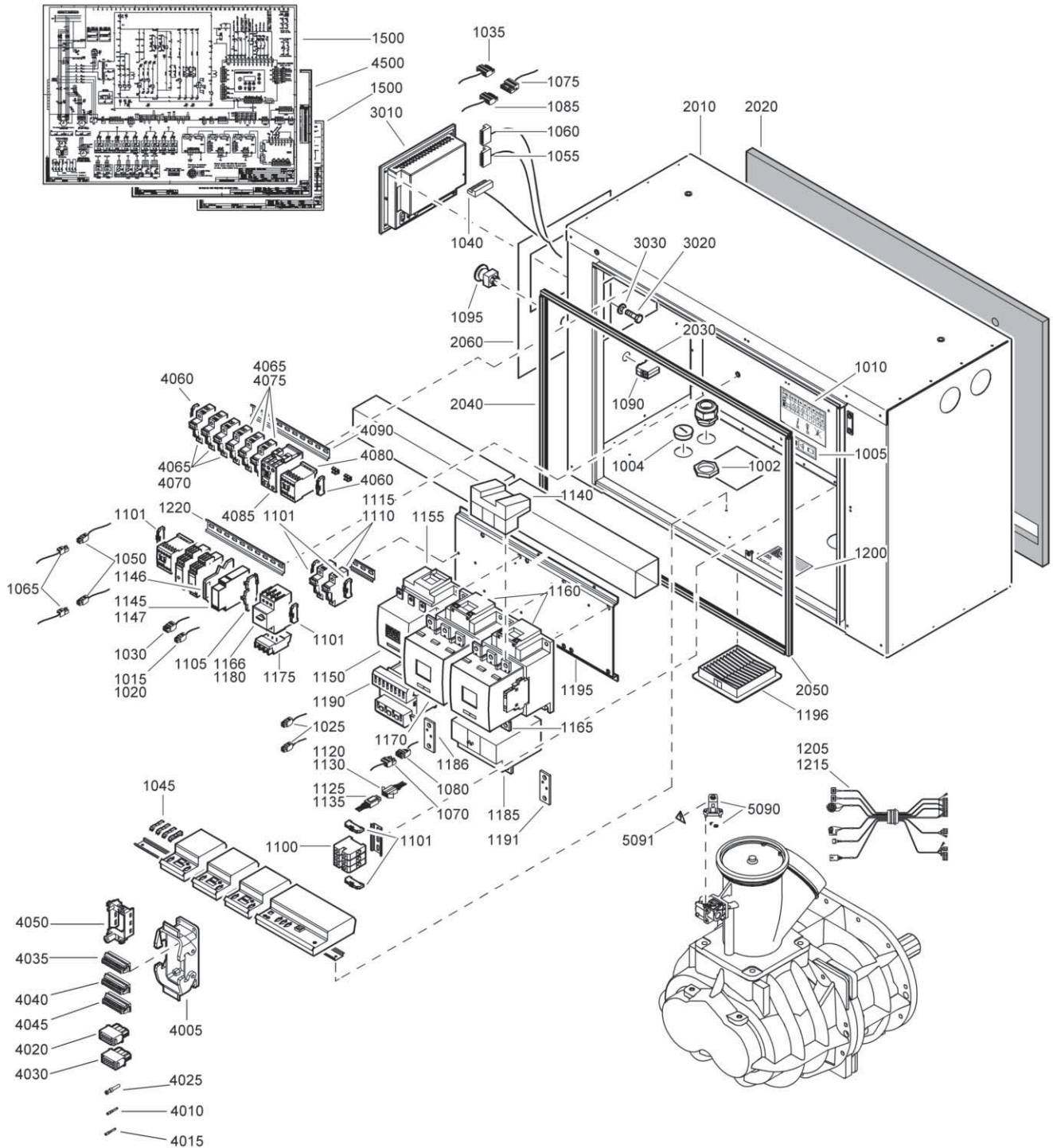
63357_12

Cubicle - CSA/UL

Ref.	Part number	Qty	Name	Remarks	Ref.	Part number	Qty	Name	Remarks
1175	• 1089 9415 56	1	Contact block		1220	1622 3697 00	• 1	Wire harness	
	1089 9415 56		GA 55+ 460V/60Hz		1231		• 3	Connection element	
	1089 9415 56		GA 55+ 575V/60Hz			1622 1692 00		GA 55+ 460V/60Hz	
	1089 9415 56		GA 75+ 460V/60Hz			1622 1692 00		GA 75+ 460V/60Hz	
	1089 9415 56		GA 75+ 575V/60Hz			1622 1692 00		GA 75+ 575V/60Hz	
	1089 9415 56		GA 90 575V/60Hz			1622 3042 00		GA 90 460V/60Hz	
1180	• 1089 9416 01	1	Aux.contact block			1622 1692 00		GA 90 575V/60Hz	
1185	• 1089 9446 22	1	Overload relay		1235	0090 1400 02	• AR	Rail	
	1089 9446 22		GA 55+ 200V/60Hz		1500	9820 3138 02	• 1	Service diagram	
	1089 9424 47		GA 55+ 230V/60Hz			1622 3602 80	• 1	Cubicle	
	1089 9424 41		GA 55+ 460V/60Hz		2010		•• 1	Cubicle	1)
	1089 9446 22		GA 55+ 575V/60Hz		2020	1622 3602 10	•• 1	Foam	
	1089 9446 22		GA 75+ 200V/60Hz		2030	1202 6584 01	•• AR	Seal	
	1089 9446 22		GA 75+ 230V/60Hz		2040	1202 6584 01	•• AR	Seal	
	1089 9424 48		GA 75+ 460V/60Hz		2050	1202 6584 01	•• AR	Seal	
	1089 9424 47		GA 75+ 575V/60Hz		2060	1622 3783 00	•• 1	Decal	
	1089 9446 22		GA 90 200V/60Hz		3010	1900 0710 12		Regulator	
	1089 9446 22		GA 90 230V/60Hz		3020	0147 1169 03		Hexagon bolt	
	1089 9446 21		GA 90 460V/60Hz		3030	0301 2315 00		Washer	
	1089 9424 48		GA 90 575V/60Hz				1	Dryer rail	
1186	• 1089 9416 70	1	Circuit breaker			1900 2600 62		Low amperage range	
	1089 9416 70		GA 55+ 200V/60Hz			1900 2600 66		High amperage range	
	1089 9416 66		GA 55+ 230V/60Hz		4010		1	Label	
	1089 9416 66		GA 55+ 460V/60Hz			1079 9924 96		below 15 A	
	1089 9416 66		GA 55+ 575V/60Hz			1079 9925 34		above 15 A	
	1089 9416 71		GA 75+ 200V/60Hz		4015	1088 0029 17	1	Housing for connector	
	1089 9416 70		GA 75+ 230V/60Hz		4020	1088 0029 58	6	Crimp contact	
	1089 9416 67		GA 75+ 460V/60Hz		4025	1088 0029 63	8	Crimp contact	
	1089 9416 66		GA 75+ 575V/60Hz		4030	1088 0029 82	1	Crimp terminal	
	1089 9416 71		GA 90 200V/60Hz		4035	1088 0029 86	3	Crimp contact	
	1089 9416 71		GA 90 230V/60Hz		4040	1088 0029 88	2	Crimp terminal	
	1089 9416 68		GA 90 460V/60Hz		4045	1088 0037 62	1	Connector	
	1089 9416 67		GA 90 575V/60Hz		4050	1088 0037 63	1	Connector	
1190	• 1089 9416 75	1	Connection block		4055	1088 0037 65	1	Connector	
1191	• 1089 9556 05	1	Air inlet		4060	1088 0036 12	1	Frame for connector	
1195	• 1613 3431 00	1	Label		4065	1089 0506 30	2	End bracket	
1200	• 1614 8949 00	1	Data plate		4070	1089 0612 01	6	Fuse holder	
1205	• 1089 9436 47	1	Transformer		4075		3	Fuse link	
	1089 9436 47		GA 55+ 200V/60Hz			1089 9168 02		below 15 A	
	1089 9436 47		GA 55+ 230V/60Hz			1089 9168 30		above 15 A	
	1089 9436 45		GA 55+ 460V/60Hz		4080		3	Fuse link	
	1089 9436 44		GA 55+ 575V/60Hz			1089 9168 62		below 15 A	
	1089 9436 47		GA 75+ 200V/60Hz			1089 9168 61		above 15 A	
	1089 9436 47		GA 75+ 230V/60Hz		4085	1089 9415 14	1	Contactora	
	1089 9436 45		GA 75+ 460V/60Hz		4090		1	Contactora	
	1089 9436 45		GA 75+ 575V/60Hz			1089 9415 25		below 15 A	
	1089 9436 47		GA 90 200V/60Hz			1089 9415 34		above 15 A	
	1089 9436 47		GA 90 230V/60Hz		4095	0090 1400 02	AR	Rail	
	1089 9436 45		GA 90 460V/60Hz		4500	9820 3549 02	1	Service diagram	
	1089 9436 45		GA 90 575V/60Hz		5090		1	Solenoid valve	
1206	• 1622 3042 10	3	Connection			1089 0702 09		50 Hz	
	1622 3042 10		GA 55+ 200V/60Hz			1089 0702 10		60 Hz	
	1622 3042 10		GA 55+ 230V/60Hz			0663 2104 83	• 1	O-ring	
	1622 3042 10		GA 75+ 200V/60Hz		5091	1088 1001 01	1	Warning mark	
	1622 3042 10		GA 75+ 230V/60Hz						
	1622 3042 10		GA 90 200V/60Hz						
	1622 3042 10		GA 90 230V/60Hz						
1210	• 1622 3399 01	1	Plate						
	1622 3399 01		GA 55+ 200V/60Hz						
	1622 3399 01		GA 55+ 230V/60Hz						
	1622 3399 01		GA 75+ 200V/60Hz						
	1622 3399 01		GA 75+ 230V/60Hz						
	1622 3399 01		GA 90 200V/60Hz						
	1622 3399 01		GA 90 230V/60Hz						
	1622 3399 01		GA 90 460V/60Hz						

1) Lined with / Bekleed met / Beklädd med / Ausgekleidet mit / Garnir de / Rivestido de / Allineato con / Foret med / Revestido com / Kledd med / Vuorattu :
Foam: 0395 6001 64(AR) 20 x 2040 x 1650

18

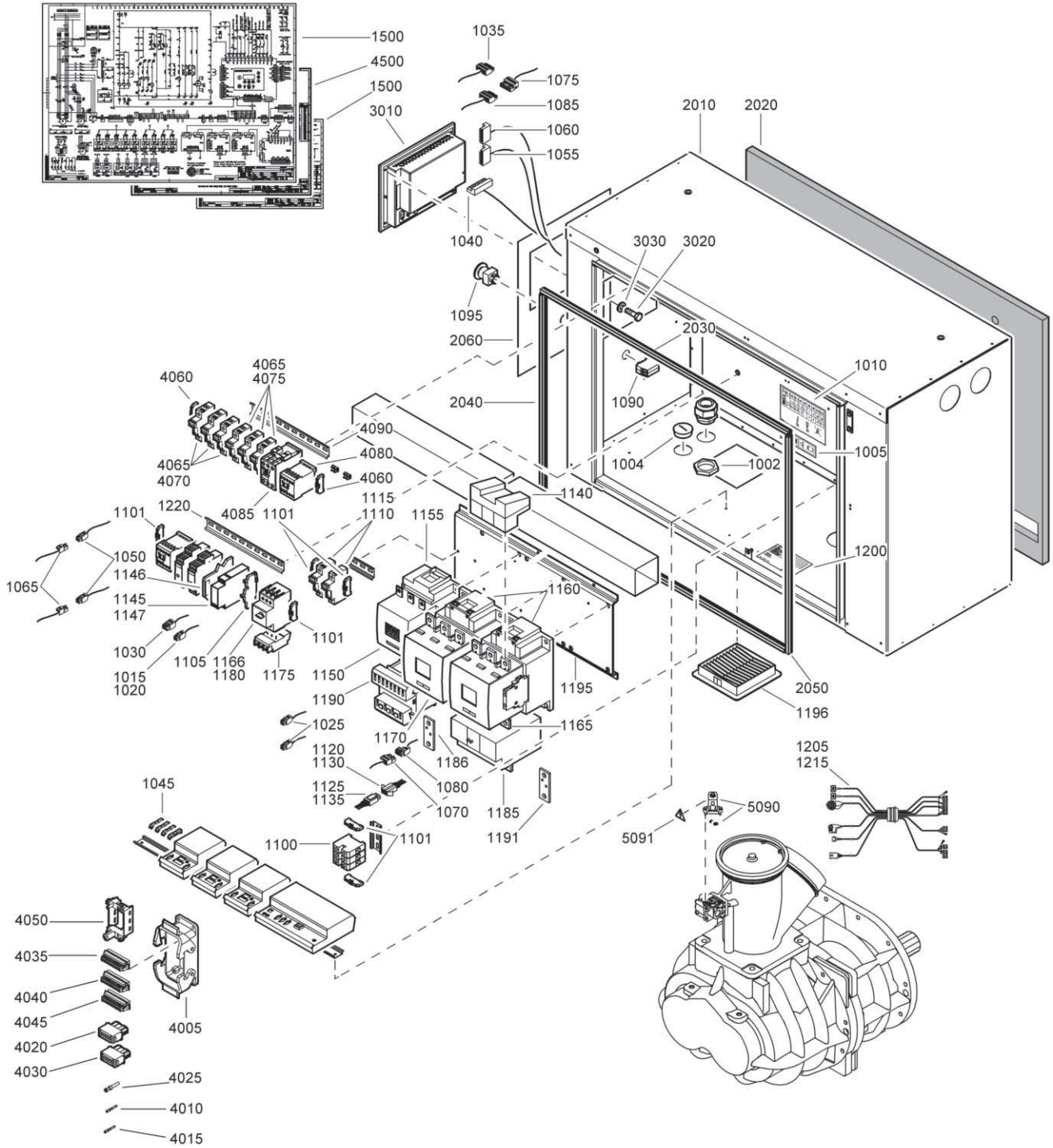


63358_12

Cubicle - IEC

Ref.	Part number	Qty	Name	Remarks	Ref.	Part number	Qty	Name	Remarks
		1	Cubicle						
	1900 2514 09		GA 55+ 230V/50Hz			1089 0506 30	4	GA 90 230V/60Hz	
	1900 2514 09		GA 55+ 230V/60Hz			1089 0506 30	6	GA 90 380V/60Hz	
	1900 2514 04		GA 55+ 380V/60Hz			1089 0506 30	4	GA 90 400V/50Hz	
	1900 2514 01		GA 55+ 400V/50Hz			1089 0506 30	6	GA 90 460V/60Hz	
	1900 2514 04		GA 55+ 460V/60Hz			1089 0506 30	6	GA 90 500V/50Hz	
	1900 2514 04		GA 55+ 500V/50Hz		1105	1089 0506 75	• 1	Terminal	
	1900 2514 08		GA 75+ 230V/50Hz		1110	1089 0612 01	• 2	Fuse holder	
	1900 2514 08		GA 75+ 230V/60Hz		1115		• 2	Fuse	
	1900 2514 05		GA 75+ 380V/60Hz			1089 0612 24		GA 55+ 230V/50Hz	
	1900 2514 02		GA 75+ 400V/50Hz			1089 0612 24		GA 55+ 230V/60Hz	
	1900 2514 05		GA 75+ 460V/60Hz			1089 0612 24		GA 55+ 380V/60Hz	
	1900 2514 04		GA 75+ 500V/50Hz			1089 0612 24		GA 55+ 400V/50Hz	
	1900 2514 07		GA 90 230V/50Hz			1089 0612 24		GA 55+ 460V/60Hz	
	1900 2514 07		GA 90 230V/60Hz			1089 0612 24		GA 55+ 500V/50Hz	
	1900 2514 06		GA 90 380V/60Hz			1089 0612 25		GA 75+ 230V/50Hz	
	1900 2514 03		GA 90 400V/50Hz			1089 0612 25		GA 75+ 230V/60Hz	
	1900 2514 06		GA 90 460V/60Hz			1089 0612 24		GA 75+ 380V/60Hz	
	1900 2514 05		GA 90 500V/50Hz			1089 0612 24		GA 75+ 400V/50Hz	
1002	0697 9809 24	• 1	Lock nut			1089 0612 24		GA 75+ 460V/60Hz	
1004	0697 9810 29	• 1	Plug			1089 0612 24		GA 75+ 500V/50Hz	
1005	1079 9901 68	• 1	Warning label			1089 0612 25		GA 90 230V/50Hz	
1010	1079 9906 09	• 1	Label			1089 0612 25		GA 90 230V/60Hz	
1015	1088 0015 02	• 1	Connector plug			1089 0612 24		GA 90 380V/60Hz	
1020	1088 0015 36	• 2	Connector socket			1089 0612 24		GA 90 400V/50Hz	
1025	1088 0031 02	• 2	Connector			1089 0612 24		GA 90 460V/60Hz	
1030	1088 0031 03	• 1	Connector			1089 0612 24		GA 90 500V/50Hz	
1035	1088 0031 05	• 1	Connector		1120	1089 0700 01	• 1	Connector	
1040	1088 0031 13	• 1	Connector		1125	1089 0700 02	• 1	Connector	
1045	1088 0031 18	• 4	Adaptor for connector		1130	1089 0700 03	• 8	Connector pin	
1050	1088 0031 22	• 2	Connector		1135	1089 0700 04	• 8	Connector socket	
1055	1088 0031 29	• 1	Connector		1140		• 1	Cover for terminal	
1060	1088 0031 49	• 1	Connector			1089 9362 04		GA 55+ 380V/60Hz	
1065	1088 0031 82	• 2	Connector			1089 9362 04		GA 55+ 400V/50Hz	
1070	1088 0031 84	• 1	Connector			1089 9362 04		GA 55+ 460V/60Hz	
1075	1088 0031 86	• 1	Connector			1089 9362 04		GA 55+ 500V/50Hz	
1080	1088 0037 04	• 1	Connector			1089 9362 04		GA 75+ 380V/60Hz	
1085	1088 0037 06	• 1	Connector			1089 9362 04		GA 75+ 400V/50Hz	
1090	1089 0362 50	• 2	Contact block			1089 9362 04		GA 75+ 460V/60Hz	
1095	1089 0362 51	• 1	Push button			1089 9362 04		GA 75+ 500V/50Hz	
1100		• 1	Terminal			1089 9362 04		GA 90 500V/50Hz	
	1089 0506 04		GA 55+ 380V/60Hz		1145	1089 9511 51	• 1	Relay	
	1089 0506 04		GA 55+ 460V/60Hz		1146	1089 9511 15	• 1	Socket for relay	
	1089 0506 04		GA 55+ 500V/50Hz		1147	1089 9511 16	• 1	Clip for relay	
	1089 0506 04		GA 75+ 380V/60Hz		1150		• 1	Contact block	
	1089 0506 04		GA 75+ 460V/60Hz			1089 9415 09		GA 55+ 230V/50Hz	
	1089 0506 04		GA 75+ 500V/50Hz			1089 9415 09		GA 55+ 230V/60Hz	
	1089 0506 04		GA 90 380V/60Hz			1089 9415 09		GA 55+ 380V/60Hz	
	1089 0506 04		GA 90 460V/60Hz			1089 9415 09		GA 55+ 400V/50Hz	
	1089 0506 04		GA 90 500V/50Hz			1089 9415 09		GA 55+ 460V/60Hz	
1101		•	End bracket			1089 9415 09		GA 55+ 500V/50Hz	
	1089 0506 30	6	GA 55+ 230V/50Hz			1089 9415 09		GA 75+ 380V/60Hz	
	1089 0506 30	6	GA 55+ 230V/60Hz			1089 9415 09		GA 75+ 400V/50Hz	
	1089 0506 30	6	GA 55+ 380V/60Hz			1089 9415 09		GA 75+ 460V/60Hz	
	1089 0506 30	4	GA 55+ 400V/50Hz			1089 9415 09		GA 75+ 500V/50Hz	
	1089 0506 30	6	GA 55+ 460V/60Hz			1089 9415 09		GA 90 380V/60Hz	
	1089 0506 30	6	GA 55+ 500V/50Hz			1089 9415 09		GA 90 400V/50Hz	
	1089 0506 30	4	GA 75+ 230V/50Hz			1089 9415 09		GA 90 460V/60Hz	
	1089 0506 30	4	GA 75+ 230V/60Hz			1089 9415 09		GA 90 500V/50Hz	
	1089 0506 30	6	GA 75+ 380V/60Hz						
	1089 0506 30	4	GA 75+ 400V/50Hz						
	1089 0506 30	6	GA 75+ 460V/60Hz						
	1089 0506 30	6	GA 75+ 500V/50Hz						
	1089 0506 30	4	GA 90 230V/50Hz						

18



63358_12

Cubicle - IEC

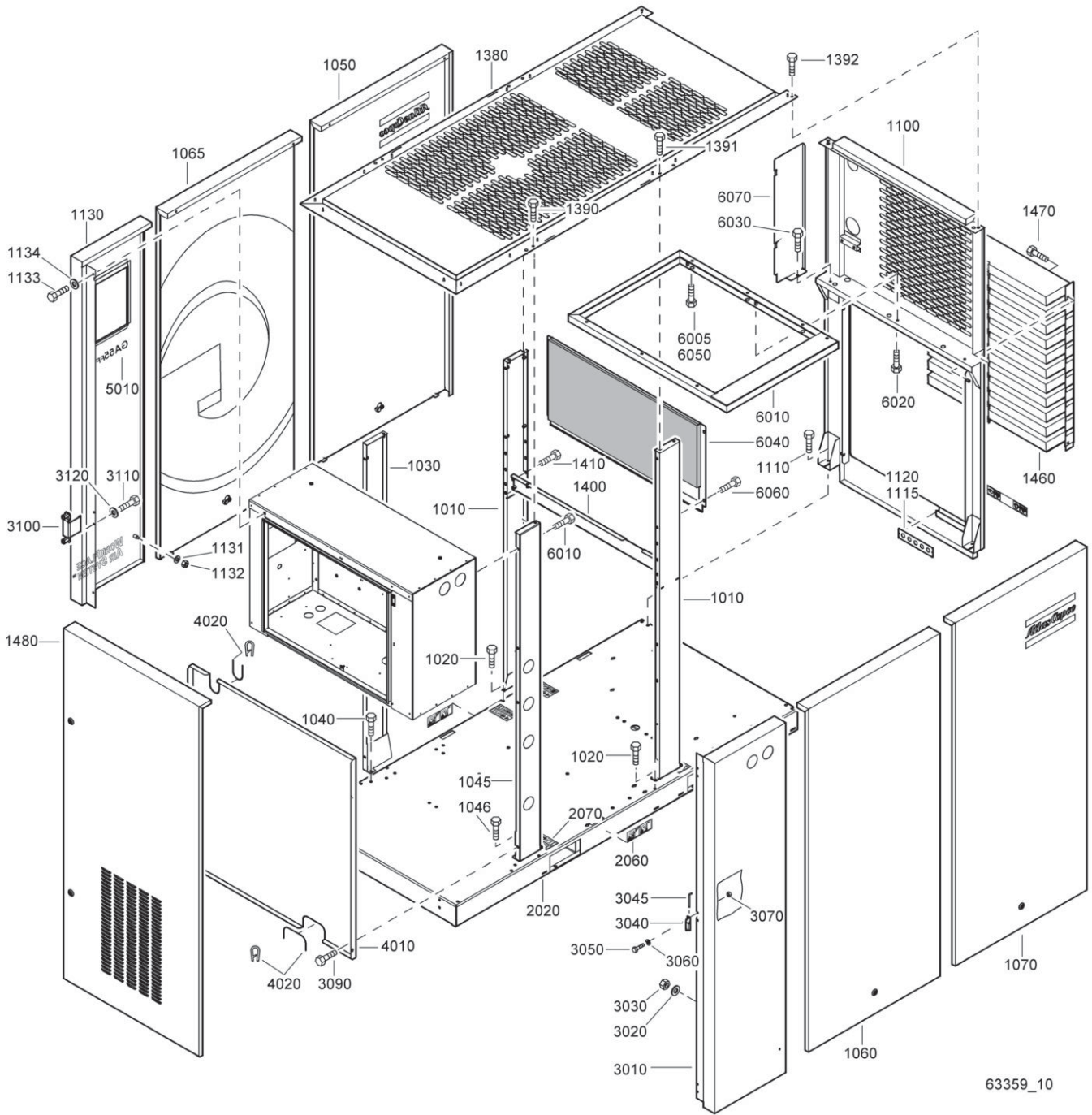
Ref.	Part number	Qty	Name	Remarks	Ref.	Part number	Qty	Name	Remarks
1155	• 1	1	Contacteur		1180	• 1	1	Circuit breaker	
	1089 9415 45		GA 55+ 230V/50Hz			1089 9416 30		GA 55+ 230V/50Hz	
	1089 9415 45		GA 55+ 230V/60Hz			1089 9416 30		GA 55+ 230V/60Hz	
	1089 9415 35		GA 55+ 380V/60Hz			1089 9416 26		GA 55+ 380V/60Hz	
	1089 9415 34		GA 55+ 400V/50Hz			1089 9416 26		GA 55+ 400V/50Hz	
	1089 9415 35		GA 55+ 460V/60Hz			1089 9416 26		GA 55+ 460V/60Hz	
	1089 9415 35		GA 55+ 500V/50Hz			1089 9416 26		GA 55+ 500V/50Hz	
	1089 9415 61		GA 75+ 230V/50Hz			1089 9416 30		GA 75+ 230V/50Hz	
	1089 9415 61		GA 75+ 230V/60Hz			1089 9416 30		GA 75+ 230V/60Hz	
	1089 9415 44		GA 75+ 380V/60Hz			1089 9416 27		GA 75+ 380V/60Hz	
	1089 9415 44		GA 75+ 400V/50Hz			1089 9416 26		GA 75+ 400V/50Hz	
	1089 9415 44		GA 75+ 460V/60Hz			1089 9416 27		GA 75+ 460V/60Hz	
	1089 9415 35		GA 75+ 500V/50Hz			1089 9416 26		GA 75+ 500V/50Hz	
	1089 9415 61		GA 90 230V/50Hz			1089 9416 71		GA 90 230V/50Hz	
	1089 9415 61		GA 90 230V/60Hz			1089 9416 71		GA 90 230V/60Hz	
	1089 9415 61		GA 90 380V/60Hz			1089 9416 28		GA 90 380V/60Hz	
	1089 9415 44		GA 90 400V/50Hz			1089 9416 28		GA 90 400V/50Hz	
	1089 9415 61		GA 90 460V/60Hz			1089 9416 28		GA 90 460V/60Hz	
	1089 9415 44		GA 90 500V/50Hz			1089 9416 27		GA 90 500V/50Hz	
1160	• 2	2	Contacteur		1185	• 1	1	Overload relay	
	1089 9415 61		GA 55+ 230V/50Hz			1089 9446 21		GA 55+ 230V/50Hz	
	1089 9415 61		GA 55+ 230V/60Hz			1089 9446 21		GA 55+ 230V/60Hz	
	1089 9415 44		GA 55+ 380V/60Hz			1089 9424 47		GA 55+ 380V/60Hz	
	1089 9415 44		GA 55+ 400V/50Hz			1089 9424 47		GA 55+ 400V/50Hz	
	1089 9415 44		GA 55+ 460V/60Hz			1089 9424 47		GA 55+ 460V/60Hz	
	1089 9415 44		GA 55+ 500V/50Hz			1089 9424 47		GA 55+ 500V/50Hz	
	1089 9415 81		GA 75+ 230V/50Hz			1089 9446 22		GA 75+ 230V/50Hz	
	1089 9415 81		GA 75+ 230V/60Hz			1089 9446 22		GA 75+ 230V/60Hz	
	1089 9415 45		GA 75+ 380V/60Hz			1089 9424 49		GA 75+ 380V/60Hz	
	1089 9415 45		GA 75+ 400V/50Hz			1089 9424 49		GA 75+ 400V/50Hz	
	1089 9415 45		GA 75+ 460V/60Hz			1089 9424 49		GA 75+ 460V/60Hz	
	1089 9415 44		GA 75+ 500V/50Hz			1089 9424 47		GA 75+ 500V/50Hz	
	1089 9415 81		GA 90 230V/50Hz			1089 9446 22		GA 90 230V/50Hz	
	1089 9415 81		GA 90 230V/60Hz			1089 9446 22		GA 90 230V/60Hz	
	1089 9415 81		GA 90 380V/60Hz			1089 9446 22		GA 90 380V/60Hz	
	1089 9415 61		GA 90 400V/50Hz			1089 9446 21		GA 90 400V/50Hz	
	1089 9415 81		GA 90 460V/60Hz			1089 9446 22		GA 90 460V/60Hz	
	1089 9415 45		GA 90 500V/50Hz			1089 9424 49		GA 90 500V/50Hz	
1165	• 1	1	Contact block		1186	• 3	3	Connection	
	1089 9415 55		GA 55+ 380V/60Hz			1622 3042 10		GA 75+ 230V/50Hz	
	1089 9415 55		GA 55+ 400V/50Hz			1622 3042 10		GA 75+ 230V/60Hz	
	1089 9415 55		GA 55+ 460V/60Hz			1622 3042 10		GA 90 230V/50Hz	
	1089 9415 55		GA 55+ 500V/50Hz			1622 3042 10		GA 90 230V/60Hz	
	1089 9415 55		GA 75+ 380V/60Hz						
	1089 9415 55		GA 75+ 400V/50Hz						
	1089 9415 55		GA 75+ 460V/60Hz						
	1089 9415 55		GA 75+ 500V/50Hz						
	1089 9415 55		GA 90 500V/50Hz						
1166	• 1	1	Connection block		1190	• 1	1	Transformer	
	1089 9416 75		GA 90 230V/50Hz			1089 9436 45		GA 55+ 230V/50Hz	
	1089 9416 75		GA 90 230V/60Hz			1089 9436 45		GA 55+ 230V/60Hz	
1170	• 1	1	Contact block			1089 9436 44		GA 55+ 380V/60Hz	
	1089 9415 56		GA 55+ 380V/60Hz			1089 9436 39		GA 55+ 400V/50Hz	
	1089 9415 56		GA 55+ 400V/50Hz			1089 9436 44		GA 55+ 460V/60Hz	
	1089 9415 56		GA 55+ 460V/60Hz			1089 9436 44		GA 55+ 500V/50Hz	
	1089 9415 56		GA 55+ 500V/50Hz			1089 9436 47		GA 75+ 230V/50Hz	
	1089 9415 56		GA 75+ 380V/60Hz			1089 9436 47		GA 75+ 230V/60Hz	
	1089 9415 56		GA 75+ 400V/50Hz			1089 9436 47		GA 75+ 230V/60Hz	
	1089 9415 56		GA 75+ 460V/60Hz			1089 9436 45		GA 75+ 380V/60Hz	
	1089 9415 56		GA 75+ 500V/50Hz			1089 9436 40		GA 75+ 400V/50Hz	
	1089 9415 56		GA 90 500V/50Hz			1089 9436 45		GA 75+ 460V/60Hz	
	1089 9415 56		GA 90 500V/50Hz			1089 9436 44		GA 75+ 500V/50Hz	
1175	• 1	1	Aux.contact block			1089 9436 47		GA 90 230V/50Hz	
	1089 9416 01		Aux.contact block			1089 9436 47		GA 90 230V/60Hz	
						1089 9436 45		GA 90 380V/60Hz	
						1089 9436 40		GA 90 400V/50Hz	
						1089 9436 45		GA 90 460V/60Hz	
						1089 9436 45		GA 90 500V/50Hz	

Cubicle - IEC

18

Ref.	Part number	Qty	Name	Remarks	Ref.	Part number	Qty	Name	Remarks
1191		•	Connection element		4080	1089 9415 14	• 1	Contactactor	
	1622 3042 00	6	GA 55+ 230V/50Hz		4085		• 1	Contactactor	
	1622 3042 00	6	GA 55+ 230V/60Hz			1089 9415 24		Below 16 A	
	1622 3042 00	6	GA 90 380V/60Hz			1089 9415 25		Above 16 A	
	1622 3042 00	3	GA 90 400V/50Hz		4090	0090 1400 02	• AR	Rail	
	1622 3042 00	6	GA 90 460V/60Hz		4500	9820 3549 02	• 1	Service diagram	
1195		• 1	Plate		5090		1	Solenoid valve	
	1622 3399 01		GA 55+ 230V/50Hz			1089 0702 09		50 Hz	
	1622 3399 01		GA 55+ 230V/60Hz			1089 0702 10		60 Hz	
	1622 3399 01		GA 75+ 230V/50Hz			0663 2104 83	• 1	O-ring	
	1622 3399 01		GA 75+ 230V/60Hz		5091	1088 1001 01	1	Warning mark	
	1622 3399 01		GA 90 230V/50Hz						
	1622 3399 01		GA 90 230V/60Hz						
	1622 3399 01		GA 90 380V/60Hz						
	1622 3399 01		GA 90 400V/50Hz						
	1622 3399 01		GA 90 460V/60Hz						
1196	1089 9556 05	• 1	Air inlet						
1200	1613 6639 00	• 1	Data plate						
1205		• 3	Connection element						
	1622 1692 00		GA 55+ 380V/60Hz						
	1622 1692 00		GA 55+ 400V/50Hz						
	1622 1692 00		GA 55+ 460V/60Hz						
	1622 1692 00		GA 55+ 500V/50Hz						
	1622 1692 00		GA 75+ 380V/60Hz						
	1622 1692 00		GA 75+ 400V/50Hz						
	1622 1692 00		GA 75+ 460V/60Hz						
	1622 1692 00		GA 75+ 500V/50Hz						
	1622 1692 00		GA 90 500V/50Hz						
1215	1622 3697 00	• 1	Wire harness						
1220	0090 1400 02	• AR	Rail						
1500	9820 3138 02	• 1	Service diagram						
	1622 3602 80	• 1	Cubicle						
2010		•• 1	Cubicle	1)					
2020	1622 3602 10	•• 1	Foam						
2030	1202 6584 01	•• AR	Seal						
2040	1202 6584 01	•• AR	Seal						
2050	1202 6584 01	•• AR	Seal						
2060	1622 3783 00	•• 1	Decal						
3010	1900 0710 12	1	Regulator						
3020	0147 1169 03	4	Hexagon bolt						
3030	0301 2315 00	4	Washer						
		1	Dryer rail						
	1900 2600 61		Low amperage range						
	1900 2600 65		High amperage range						
4005	1088 0029 17	• 1	Housing for connector						
4010	1088 0029 58	• 6	Crimp contact						
4015	1088 0029 63	• 8	Crimp contact						
4020	1088 0029 82	• 1	Crimp terminal						
4025	1088 0029 86	• 3	Crimp contact						
4030	1088 0029 88	• 2	Crimp terminal						
4035	1088 0037 62	• 1	Connector						
4040	1088 0037 63	• 1	Connector						
4045	1088 0037 65	• 1	Connector						
4050	1088 0036 12	• 1	Frame for connector						
4060	1089 0506 30	• 2	End bracket						
4065	1089 0612 01	• 6	Fuse holder						
4070		• 3	Fuse						
	1089 0612 24		Below 16 A						
	1089 0612 25		Above 16 A						
4075		• 3	Fuse link						
	1089 0612 28		Below 16 A						
	1089 0612 30		Above 16 A						

19



63359_10

Bodywork

Ref.	Part number	Qty	Name	Remarks	Ref.	Part number	Qty	Name	Remarks
1010	1622 5577 80	2	Beam assembly 1)		2070	1079 9903 48	• 4	Warning label	
1020	0147 1963 08	4	Hexagon bolt		3010	1622 3644 00	1	Panel	
1030	1622 5578 80	1	Beam assembly 2)		3020	0301 2335 00	1	Washer	
1040	0147 1963 08	2	Hexagon bolt		3030	0291 1110 00	1	Lock nut	
1045	1622 5676 00	1	Beam		3040	1621 0606 00	4	Hinge	
1046	0147 1963 08	2	Hexagon bolt		3045	1621 0607 00	4	Hinge	
1050	1622 3637 80	1	Door assembly 2)		3050	0211 1249 03	8	Cap screw	
	1622 3633 80	• 1	Lock		3060	0333 3220 00	8	Lock washer	
	0690 1132 01	• 1	Decal		3070	0261 2108 00	2	Nut	
1060	1622 3636 80	1	Door assembly 2)		3090	0147 1963 08	4	Hexagon bolt	
	1622 3633 80	• 1	Lock		3100	1622 4616 00	1	Bracket	
1065	1622 3636 81	1	Door assembly 2)		3110	0211 1249 03	2	Cap screw	
	1622 3633 80	• 1	Lock		3120	0333 3220 00	2	Lock washer	
1070	1622 3638 80	1	Door assembly 2)		1622 3642 80	1	Plate	1)	
	1622 3633 80	• 1	Lock		4010		• 1	Plate	
	0690 1132 01	• 1	Decal		4020	1503 1056 00	• AR	Seal	
1100	1622 3616 00	1	Panel inlet		5010		1	Decal	
1110	0147 1963 08	4	Hexagon bolt			1622 4631 05		GA55+	
1115	0226 3343 59	2	Tap screw			1622 4631 06		GA55+ FF	
1120	1622 6605 00	1	Drain plate			1622 4631 03		GA75+	
1130	1622 3617 80	1	Panel assembly			1622 4631 04		GA75+ FF	
	1613 9846 01	• 1	Decal			1622 4631 01		GA90	
1131	0301 2335 00	1	Washer			1622 4631 02		GA90 FF	
1132	0291 1110 00	1	Lock nut		6005	0211 1325 03	6	Cap screw	
1133	0147 1247 03	1	Hexagon bolt		6010	1622 3643 00	1	Dryer frame	
1134	0333 3220 00	1	Lock washer		6020	0147 1963 08	6	Hexagon bolt	
1380	1622 3615 80	1	Roof assembly 2)		6030	0160 6040 00	4	Screw	
1390	0147 1963 08	2	Hexagon bolt		6040	1622 3626 80	1	Plate	1)
1391	0147 1963 08	4	Hexagon bolt		6050	0111 1686 12	4	Plug	
1392	0147 1963 08	2	Hexagon bolt		6060	0147 1963 08	4	Hex.bolt	
1400	1622 3782 00	1	Z-plate		6070	1622 4636 00	1	Plate	
1410	0147 1963 08	4	Hexagon bolt						
1460	1622 0533 81	1	Baffle	3)					
1470	0211 1249 03	4	Cap screw						
1480	1622 5531 80	1	Cubicle door assy						
	1622 3633 81	• 2	Lock						
	1622 3600 80	1	Frame assembly						
2020		• 1	Frame						
2060	1079 9922 39	• 2	Warning label						

1-3) Lined with / Bekleed met / Beklädd med / Ausgekleidet mit / Garnir de / Rivestido de / Allineato con / Foret med / Revestido com / Kledd med / Vuorattu :

1) Foam: 0395 6001 66(AR) 25 x 2040 x 1650
2) Foam: 0395 6001 67(AR) 30 x 2040 x 1650
3) Foam: 0395 6001 69(AR) 50 x 2040 x 1650

21

Service kits

Ref.	Part number	Qty	Name	Remarks	Ref.	Part number	Qty	Name	Remarks
	2901 0245 01	1	Oil can ROTO-INJECTFLUID 5 l			2901 1452 00	1	Scavenge line kit	
						1622 3654 80 ●	1	Scavenge line	
	2901 0522 00	1	Oil can ROTO-INJECTFLUID 20 l			0663 2108 11 ●	1	O-ring	
						1613 9005 01 ●	1	Non return valve	
						0661 1000 38 ●	1	Seal washer	
	2901 0045 01	1	Oil barrel ROTO-INJECTFLUID 5 l			2901 1454 00	1	Thermostat kit 40°C	
						1622 3759 80 ●	1	Thermostat ass'y	
						0663 7137 00 ●	1	O-ring	
	2901 1453 00	1	Minimum Pressure Valve kit			2901 1464 00	1	Thermostat kit 60°C	
	0663 7139 00 ●	1	O-ring			1622 3759 81 ●	1	Thermostat ass'y	
	1613 3223 01 ●	1	washer			0663 7137 00 ●	1	O-ring	
	1622 3662 00 ●	1	spring			2901 1455 00	1	Tropical thermostat kit (75°C)	
	0663 2101 01 ●	1	O-ring			1622 3759 82 ●	1	Thermostat ass'y	
	1622 3664 00 ●	1	spring			0663 7137 00 ●	1	O-ring	
	0335 3111 00 ●	1	circlip						
	0633 3120 00 ●	1	O-ring						
	2901 1460 00	1	Element mounting kit			2901 0566 12	1	Air/ Oil filter kit (4000 Hrs)	
	0663 2109 78 ●	1	O-ring			1613 9503 00 ●	1	Air filter element	
	0337 2293 23 ●	1	Parallel key			1622 3652 80 ●	1	Oil filter element	
	0663 2111 46 ●	1	O-ring			0663 2106 16 ●	1	O-ring	
	1622 0977 00 ●	1	gasket			2901 1096 00	1	Air/ Oil long life filter kit (8000 Hrs)	
	0663 2107 37 ●	1	O-ring			1622 4601 80 ●	1	Oil filter element	
						0663 2106 16 ●	1	O-ring	
						1613 9503 00 ●	2	Air filter element	
	2901 1084 00	1	Check and Oil stop valve kit			2901 0566 22	1	Oil separator kit	
	1622 0977 00 ●	1	Gasket			1622 3656 00 ●	1	Oil separator	
	0661 1000 44 ●	1	Seal washer			0663 2111 16 ●	2	O-ring	
	0661 1000 44 ●	1	Seal washer			2901 1465 00	1	Electronic drain kit	
	0661 1000 38 ●	1	Seal washer			1622 3798 81 ●	1	Drain assembly	
	0661 1000 39 ●	1	Seal washer			9820 9583 00 ●	1	Maintenance & operating manual CDi16	
	1622 0796 00 ●	1	Spring			2901 1453 80	1	Preventative maintenance kit GA55+-90	
	1622 9639 00 ●	1	Check valve			2901 1453 00 ●	1	MPV kit	
	0663 7138 00 ●	1	O-ring			2901 1084 00 ●	1	Check & Oil stop valve kit	
	1613 2357 00 ●	1	Spring			2901 1463 00 ●	1	Unloader kit	
	1613 8907 00 ●	1	Valve body			2901 0566 12 ●	1	Air/Oil filter kit	
						2901 0566 22 ●	1	Oil separator kit	
	2901 1462 00	1	Motor overhaul kit						
	0335 2178 00 ●	1	Circlip						
	0508 1100 98 ●	1	Bearing						
	1616 5517 00 ●	1	Lipseal kit						
	1622 3665 00 ●	1	Bushing						
	1622 3740 00 ●	1	Drain nipple						
	0663 2107 89 ●	1	O-ring						
	0502 1092 55 ●	1	Bearing						
	2901 1463 00	1	Unloader						
	1622 3686 00 ●	1	Valve						
	1622 3694 80 ●	1	Blow off valve						
	1622 3690 00 ●	1	Bushing						
	1622 3689 00 ●	1	Guidance tape						
	1622 3691 00 ●	1	Quadring						
	0663 7154 00 ●	1	O-ring						
	1622 3182 00 ●	1	Guide						
	1622 3183 00 ●	1	Seal						
	1622 3184 00 ●	1	Bushing						
	1622 3185 00 ●	1	Spring						
	0301 2318 00 ●	2	Washer						
	0160 0996 86 ●	2	Screw						
	0663 2111 55 ●	1	O-ring						
	0663 2107 37 ●	1	O-ring						
	0211 1957 79 ●	2	Screw						
	0661 1000 40 ●	1	Seal washer						

Atlas Copco Stationary Air Compressors

GA 55⁺, GA 75⁺, GA 90 Aircooled

GA 55⁺, GA 75⁺, GA 90 Watercooled

Parts list

What sets Atlas Copco apart as a company is our conviction that we can only excel in what we do if we provide the best possible know-how and technology to really help our customers produce, grow and succeed.

There is a unique way of achieving that - we simply call it the Atlas Copco way. It builds on **interaction**, on long-term relationships and involvement in the customers' process, needs and objectives. It means having the flexibility to adapt to the diverse demands of the people we cater for.

It's the **commitment** to our customers' business that drives our effort towards increasing their productivity through better solutions. It starts with fully supporting existing products and continuously doing things better, but it goes much further, creating advances in technology through **innovation**. Not for the sake of technology, but for the sake of our customer's bottom line and peace-of-mind.

That is how Atlas Copco will strive to remain the first choice, to succeed in attracting new business and to maintain our position as the industry leader.

